

ALASKA CAPITAL ENGINEERS

Upcoming Events

- February ASCE/APDC Luncheon (2/8/17) - Colin Maynard, PE; Patrick J. Tami, PLS; John Kerr, PLS
- February Banquet (2/25/17) - RADM Michael McAllister

Inside This Issue

1. Upcoming Events & Speakers
2. Treasurer's Message
- 3-5. Letter from Region 8 Governor
6. ASCE News Briefs and Links
7. Region 8 & 9 Workshop
8. APDC Fly-In Events
9. Information Shorts
10. MATHCOUNTS
11. New Branch Website
- 12-14. ACE Sponsors
15. Officer Information

February Menu Lunch Buffet

February, 2017
Catering by The Hangar

Chicken Caesar Wraps
Club Sandwiches
Salad



Contact Justin Kanouse or Mike Story to submit ideas for luncheon Speakers



Treasurer's Message

Hello Alaska Capital Engineers and Fellow Professionals,

February is here and, as usual, it's the busiest month of the year for the Juneau Branch.

We will kick off the month by hosting the Alaska Professional Design Council's annual legislative fly-in. This year's fly-in includes several events throughout the week that you are welcome to attend. On Tuesday, the Alaska Section will be releasing the Alaska Infrastructure Report Card at the downtown library. There's no lunch at AEL&P this month. Instead, please join us on Wednesday for the APDC luncheon that will be held at the Hangar Ballroom. Following the luncheon, Governor Walker and the Juneau Branch will unveil the ASCE Historic Monument plaque at the Governor's Mansion. Please see the schedule of events for more details.

We will end the month with the celebration of Engineer's Week. Our annual E-Week Scholarship Fundraiser Banquet will be held on February 25, where we will announce this year's Project of the Year and Engineer of the Year awards. This banquet is also our main fundraiser for the ASCE Juneau Branch scholarship program. Last year, thanks to your generous donations, we were able to award two scholarships to Juneau high school seniors. We'll be counting on your generous contributions to make this year a success as well.

We look forward to seeing you around town this month!

Matt McGuan

ASCE Juneau Branch Treasurer

ASCE to roll out Alaska Infrastructure Report Card

By Greg Kinney, ASCE Region 8 Governor

On February 7th, in conjunction with the annual APDC Legislative Fly-In, the Alaska Section of the American Society of Civil Engineers (ASCE) will roll out the Alaska Infrastructure Report Card. With this event, Alaska will become the 37th state to publish a state report card, bringing the national report card to the local level. The event release is scheduled for 10 AM in the Downtown Library in Juneau on that date.

This is the culmination of a year-long effort, conducted by ASCE members and student members across the state, under the leadership of Tor Anderzen (Alaska Section Treasurer). As with the National Infrastructure Report Card, which has been updated every three years since 1998 for public and policymaker release, the report card will present a high level overview of the existing conditions, situation and prospects for many categories of public infrastructure.

Why are we doing this? It's because public infrastructure is vital to the functioning of our state. In instances where our infrastructure is deteriorating or underperforming, it is imperative to identify it, and to prioritize maintenance or reconstruction where needed. As documented in ASCE's "Failure to Act" reports, higher costs and inefficiencies related to infrastructure are estimated to cost each household about \$3400 per year nationally from 2016 to 2025. As with the nation, Alaska cannot afford this kind of drain on its competitiveness and well-being. Therefore, it's our goal to help frame these issues for our policymakers, so that short term and longer term budgeting policies can be appropriately shaped.

(continued on page 4)

ASCE to roll out Alaska Infrastructure Report Card

For Alaska, the following categories will be reported in February:

- Aviation
- Bridges
- Dams
- Energy
- Marine Highway System
- Ports and Harbors
- Roads
- Solid Waste
- Water and Wastewater

Each of these elements of infrastructure was evaluated by a panel of ASCE members based on experience, research reports, official documents, and interviews. The following criteria were then used for evaluation:

- Capacity
- Condition
- Operations and Maintenance
- Funding
- Future Needs
- Public Safety
- Resilience
- Innovation

(continued on page 5)

ASCE to roll out Alaska Infrastructure Report Card

In evaluating the infrastructure, the teams have identified a number of categories of infrastructure in which Alaska has done very well. This may be a result of Alaska's youth relative to other states, so that much infrastructure is still relatively new. It may also be a result of high levels of public and private investment spending in certain categories since the development of Prudhoe Bay in the late 1970s.

On the other hand, there remain many challenges, some of them environmental, such as permafrost, coastal erosion and other climate-related issues. These challenges are familiar to Alaskan engineers, and technical approaches have been developed to mitigate these effects; however, cost effective solutions are not always available.

Some of the greatest challenges are not technical at all, but rather are cultural and socioeconomic, and related to the low population density of the state. This is often referred to as the rural/urban divide, but there is no description or label that is without flaws. ASCE adopted the terminology "on-road" vs. "off road." While "on road" (generally highway accessible) areas of the state enjoy economies of scale, and a relatively high and diverse population capable of maintaining and supporting infrastructure, the "off road" areas are sparsely populated and often subsistence-based. These communities often lack the skill base and the economic stability for such support. In addition, these areas are burdened with high costs of imported fuel, goods and services. Finally, any improvement project in "off road" Alaska must confront high logistical barriers, making capital improvements both sporadic and expensive.

It's important to understand that engineering and new construction are not always a good solution. For many categories of infrastructure, investments in maintenance could avert the costs of new replacement infrastructure while providing stable service.

The full details of the report will be available upon release of the Report Card in February. We'll be writing a followup column to discuss the details at that time, and look forward to continuing dialog within and outside the engineering community on these issues.

News Briefs



[A Chance to Make a Difference](#)

February 1, 2017

Engineers Week, held from Feb. 19 to Feb. 25, is a chance for us to shine a spotlight on engineers, often the silent heroes in our communities. It is a time to reflect and celebrate...

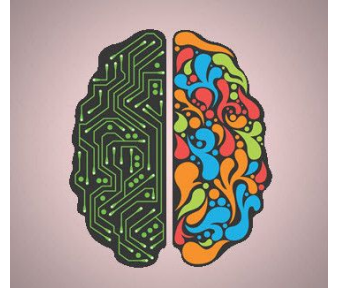
[Read more >>](#)

[Mind Your Mind](#)

December 15, 2016

My studies and experience convince me that the trajectory of our professional and personal lives will be heavily influenced by our brain literacy; that is, what we know about our brain, how we apply what...

[Read More >>](#)



Follow the links below to learn more about the condition of America's Infrastructure. The Infrastructure Report Card Process is underway with the scheduled report release in March of 2017.

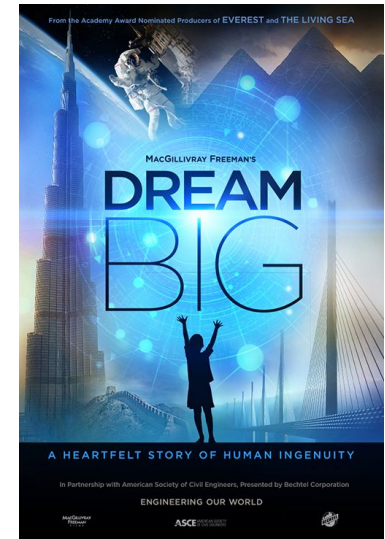
[Failure to Act reports](#) [Report Card on America's Infrastructure](#)



Region 8 & 9 Workshop



Last month regions 8 & 9 had their annual workshop, Ethan Roemeling attended this workshop as the Juneau Branch representative. This workshop had attendance from all 10 states that make up the two regions and had participants from student sections, young member sections, section and branch leaders as well as representatives from the ASCE national level including the current ASCE President Norma Jean Mattei, and the President elect Kristina Swallow. This workshop allows members from all across the country to talk and collaborate, to exchange ideas and bring back new information to their perspective branches and sections. In addition to the networking and professional development attendants were also able to watch the ASCE film “Dream BIG” which focuses on changing the conversation about engineering and works to inspire the next generation of engineers. Workshops like these are a great resources to both new and experienced engineers and work to develop the engineering profession as a whole.



Alaska Professional Design Council's annual legislative fly-in

Tuesday 2/7

10:00 am - Media Press Conference: State of Alaska Infrastructure Report Card Release, Downtown Library

Wednesday 2/8

11:30 am - APDC Luncheon, Hangar Ballroom, RSVP appreciated but not required to attend

2:00 pm - Unveiling of new Governor's Mansion ASCE Plaque, Governor's Mansion

Thursday 2/9

5:00 pm - After hours reception, Buoy Deck

Friday 2/10

10:30 am - KINY Radio "Action Line", Tune in to hear more about the infrastructure report card release



Professional Development Hours

The ASCE Juneau Branch will provide electronic continuing education development hour certificates for those who are interested in tracking development hours received by attending the Alaska Capital Engineers Luncheons to hear speakers present on engineering topics. Certificates can be found on the branch webpage <http://branches.asce.org/juneau/>

NSPE Statewide Meeting

Mark Your Calendars: March 17-18, 2017 Statewide Meeting of the Board for the Alaska Chapter of the National Society of Professional Engineers is scheduled to be held in Juneau in the Spring. Stay tuned for more details. Banquet and installation of Statewide Officers at the Baranof Hotel on March 18. Save the dates, come and network with Officers from around the State of Alaska.

Engineer of the Year and Project of the Year

Engineer/Project of the Year will be awarded at the annual banquet on February 25, 2017. The banquet will be located at the Baranof and tickets can be purchased from Juneau Branch Officers for \$50





The Southeast Alaska Regional MATHCOUNTS Competition will be held at Juneau Douglas High School on February 11, 2017.

The Alaska State Competition will be held in Juneau this year at the University of Alaska Southeast Egan Library Facility on March 18, 2017. We are looking for volunteers for this years competitions, particularly the State competition in March. Please contact Doug Murray, State Co-Coordinator and SE Coordinator, if you are interested in helping with this events. Contact Doug at 780-6151 or dougmurray@pdceng.com.

MC Problems of the Week:

- A. The sum of the digits of 2017 is 10. What is the next year in which this will occur?
- B. The number 2017 is prime. What was the most recent year before 2017 that was also a prime number?

*Answer see page 15



New Branch Website

The Juneau Branch of ASCE has a brand new website. Bookmark this website for easy access to the events calendar, PDH certificates, new and archived newsletters, contact information and much more.

For questions or concerns regarding the Juneau Branch ASCE website please contact Ethan Roemeling



<http://branches.asce.org/juneau/>



Thanks to our ACE Sponsors

*Partnering with you,
finding creative solutions
for tomorrow's energy
challenges.*



526 Main Street
Juneau, Alaska
99801
907-586-9788

Serving Southeast Alaska since 1980.



Aurora Harbor Rebuild, Juneau



USCG Rescue 21 AK Remote Sites



ENGINEERS, INC.

9360 Glacier Hwy, Ste. 100, Juneau, AK 99801
Phone 907.586.2093 Fax 907.586.2099
www.pndengineers.com

**Innovative
Design
Solutions**

Engineering Services: Civil, Structural, Contract Administration, Marine Facilities, Geotechnical, Planning, Permitting, Surveying, Hydrology, Coastal Engineering, Environmental, Construction Engineering Support, Transportation and Recreational Facilities



Thanks to our ACE Sponsors




PDC INC. ENGINEERS

With the teams from R&M Engineering and now Murray & Associates we can provide additional expertise and resources.

We are here to Support & Grow Southeast Alaska

Civil • Structural • Mechanical • Electrical • Fire Protection • Geotechnical • Environmental • Planning • Survey



Serving Alaska for more than 50 years.
dowl.com

Environmental & Land Development
Water / Water Resources
Transportation
Civil
Geo-Construction

DOWL
ANCHORAGE FAIRBANKS JUNEAU KETCHIKAN KODIAK

Thanks to our ACE Sponsors

EEIS CONSULTING ENGINEERS, INC.

Bruce R. Berryhill, P.E.
Senior Project Engineer

Phone (907) 258-3231 Fax (907) 272-1288 Cell (907) 321-1962
bberryhill@eeis.net www.eeis.net
Mailing Address: P.O. Box 92169, Anchorage, AK 99509-2169
4400 Business Park Boulevard, Suite B100, Anchorage, AK 99503



SERVICES

- Water & Wastewater
- Water Resources
- Waterfront Facilities
- Building Facilities – LEED
- Fisheries Habitat & Hatchery Engineering
- SCADA & Control Systems

CONTACT:

Don Beard, PE
217 2nd Street, Suite 207, Juneau, AK 99801
907-586-6400

TETRA TECH ALASKA, LLC
SERVING ALASKAN COMMUNITIES FOR OVER 40 YEARS

www.tetrattech.com

The logo for Wilson Engineering, Inc., featuring a stylized 'W' and 'E' in a vertical stack.

WILSON ENGINEERING, INC.
Project Engineers & Architects

Jeffrey W. Wilson, P.E. - President

175 South Franklin Street, Suite 300 • Juneau, Alaska 99801
907-586-2100 • Fax: 907-463-4193
Cell: 907-321-3210 • jwilson@wileng.net

The logo for Chilkat Surveying & Mapping, LLC, featuring a surveying instrument on a tripod.

Chilkat Surveying & Mapping, LLC
Joshua Ivaniszek, PLS, CFEDS
Manager

10654 Porter Lane
Juneau, Alaska 99801



Membership and Renewal

Thank you for your continued membership and support for ASCE and NSPE. Our professional organizations provide a great opportunity to network with other members of the engineering profession. Select the links below for society membership information.

[ASCE Membership Information](#)

[NSPE Membership Information](#)

TO SUPPORT
ALASKA CAPITAL
ENGINEERS,
CONSIDER
NEWSLETTER
SPONSORSHIP.
CONTACT JUSTIN
KANOUSE FOR
MORE
INFORMATION.

2016-2017 Alaska Capital Engineers Officers

ASCE

President - Justin Kanouse, EIT
Vice President - Mike Story, PE
Treasurer - Matt McGuan, PE
Secretary - Ethan Roemeling, EIT
Past President - Sam Kito III, PE
Emeritus - Don Gotschall, PE

Special Committees

DiscoverE Week - Please Volunteer
Halibut Feed - Please Volunteer

ASPE - Alaska Society Contacts

Past President - Brad Fristoe, PE
President - Angela Smith, PE
President Elect - Leora Houtary, PE
Secretary - Jordan Martin, EI
Treasurer - Soo Choi, PE
NSPE House of Delegates - Michael Dean, PE
Anchorage Chapter Director - Joe Taylor, PE
Fairbanks Chapter Director - Frank Wuttig, PE
Juneau Chapter Director - Darrell Wetherall, PE

Answer to MC Problems of the Week:

A. 2026 B. 2011

