



The Newsletter of the Palm Beach Branch, Florida Section of the American Society of Civil Engineers

Dates to Remember:

- **March 8**
Monthly Lunch Mtg.
- **April 6**
FAU Concrete Exo/
Fair & ASCE Happy
Hour Mixer
afterwards
- **April 7**
Engineers in
Government Night
- **April 12**
Monthly Lunch Mtg.
- Click here for other
events - *It's
constantly updated!*

<https://teamup.com/ks5494681d4ab8f81f/>

Contents:

President's Message	1
New Website	2
Upcoming Monthly Meeting	2
EIGN	3
Math Counts	4
SECME	5
ASCE MRLC	6
In the News	7
Field Trip	8
ASCE South East Student Conference	9
Job Postings	10-12

President's Message

The year has started off with some great events that have continued the traditions of the Palm Beach Branch in technical training, professional networking and community involvement.

On the technical front, we are excited to announce that we have a newly established Chapter of the Environmental & Water Resources Institute (EWRI) in Palm Beach. We will launch the Chapter with our May 10th Luncheon by Pete Singhofen showcasing the ICPR4 software. The next major event for EWRI will be the International Congress being held May 22-26 at The Breakers. We hope these events will serve to launch our Chapter as a prominent feature of our local community of water resources professionals. In addition to the progress in our EWRI chapter, our Young Member Coordinator Vijay Mishra recently held a technical field trip showcasing the L-8 Reservoir Project. All attendees gave great reviews.

These past few months we were blessed by great turnouts at two social events. Many thanks to Fattoush Jafar for our Joint Societies Mixer in January. Based on the success of the event, we are planning another one for this summer and hope to see you there. We also joined with the FAU Student Chapter for a successful mixer on-campus during E-Week. Look for more events with FAU in the months to come. These students are the future of our profession and we are excited to have them involved. Unfortunately, we had to reschedule the February picnic to the disappointment of many. Please keep your calendars open because we haven't given up on hosting some Cornhole and Hula hoop tournaments in the future.

One thing I am most proud of this year has been our continued commitment to K-12 education. Already this year we have been participants in the STEM Education Council with the PBC School District. We provided volunteers at MathCounts with FES and at the Elementary SECME competition. We have also had several engineers in the classrooms of Freedom Shores Elementary and JFK Middle. If you want to help out, please contact me anytime, there is plenty of need and it is always very rewarding.

Our next few months should be very exciting as we continue to gather together to help our profession and our community. With the Bowl-A-Thon in March and Engineers in Government Night (EIGN) in April there will be a lot going on. EIGN will be especially exciting with Dr. Norma Jean Mattei as our keynote speaker. Dr. Mattei is the President-Elect of the National ASCE Organization. We are honored to host her at our event. EIGN is also the time of year where we recognize the best of our profession, with the Project, Engineer, Young Engineer, and Government Engineer of the Year. We also plan on recognizing recent inductees into Lifetime Membership. Don't forget to submit your nominations, and come out to support the honored recipients.

We are proud of the impact each of these events have on our profession and community. I look forward to seeing you in the weeks and months to come as we continue to uphold this tradition.

Sincerely,

Brent Whitfield, P.E.
President, Palm Beach Branch
bwhitfield@adaeng.net
@EngineerBrent

Advertising Opportunities

Renew your Newsletter & Website Sponsorship: \$100 for 2016 Includes website & 4 newsletters to over 700 professionals

Job Posting Opportunities

Newsletter & Website Sponsorship: \$50 per listing - runs for 6 months Includes website & 2 newsletters to over 700 professionals ~See attached forms~

New WEBSITE

We are pleased to announce that the ASCE Palm Beach Branch has a new and improved website.

Go check it out at: <http://branches.asce.org/palmbeach/>

Please use the new website for staying up to date with the latest branch news and for making your lunch reservations for our monthly lunch meetings, beginning with our next lunch meeting on March 8, 2016. The old website is in the process of being shut down and will no longer be updated.

Upcoming Monthly Meeting

WHEN: Tuesday, March 8, 2015 from 12:00 -1:00 P.M.

SPEAKER: David Beall

TOPIC: Resins – Fad or Future (PDHs to be offered are pending)

DESCRIPTION:

Resins are now being used where concrete once was for soil stabilization, slab lifting and leak repair. Two recent case studies at the Port of Palm Beach will be shown. A successful sinkhole fill and lift using a combination of Prime Resin 920 and Precision Lift, and a 200 foot plus section of sea wall where multiple leaks were successfully sealed.

WHERE: Vista Center – 2300 N. Jog Road, West Palm Beach, FL 33411 (Room 1E-58)

LUNCH MENU: \$10 cash/check or \$10.28 by credit card. Use the on-line registration provided at <http://branches.asce.org/palmbeach/>

Please make your reservation prior to 9:30am on the day of the meeting. Contact Samantha Reilly at 561-209-7786 if you need assistance.

ENGINEERS IN GOVERNMENT NIGHT

The ASCE Palm Beach Branch will be hosting the annual **Engineers in Government Night (EIGN)** at the South Florida Water Management District Headquarters in West Palm Beach on **April 7th, 2016**.

EIGN honors the accomplishments and contributions of engineers in the public and private practice in Palm Beach County. Take some time to recognize your colleagues and nominate them for an award to be presented at this event in the following categories: *Civil Engineer of the Year, Young Civil Engineer of the Year, Government Civil Engineer of the Year and Outstanding Project of the Year.*

Sponsors are an important part of making this event free to attendees and contributing to the FAU ASCE Branch as they host the ASCE Southeast Student Conference in 2017, as well as our local scholarship! See attached nomination and sponsorship forms to be submitted by **March 18, 2016**.

This year we have a special guest speaker, **Dr. Norma Jean Mattei, the ASCE National President-Elect!**

Recently, Dr. Mattei addressed the US Senate Committee on Environment & Public Works. The link below will take you to a website with a video of the committee meeting. Dr. Mattei speaks between time 48:30 and 55:12. Attached is her statement that she submitted to the committee on behalf of ASCE concerning the condition of water resources infrastructure in our nation.

<http://www.epw.senate.gov/public/index.cfm/hearings?id=F8A0C8CC-D434-4CE1-B135-FE27586D25B6>

MathCounts 2016

We were pleased to help FES with the annual MathCounts event held at the Gulfstream School. There were 11 schools and roughly 90 Mathletes in attendance. Many congratulations to Eagles Landing Middle School for their strong performances in the morning and afternoon sessions. Many thanks to the volunteers who came out to proctor and grade the exams as well as judge the competition. At ASCE we are always grateful for the opportunity to help FES with their tireless efforts at this event.

For those of you that have never attended, it really is amazing to watch middle school students face off to answer a tricky math question in less than 60 seconds in front of an auditorium of their peers. Below is a sample question for you to try out. Don't forget to set your timer.

A group of children stopped to buy ice cream from a stand that sold 9 different flavors of ice cream. When every child in the group had purchased one double-scoop cone with two different flavors, every possible two-flavor combination had been served exactly once. If none of the children purchased the same two flavors, how many children were there in the group?



Elementary SECME 2016

We were pleased to help the Palm Beach County School District with the annual Elementary SECME competition on February 27th at Santaluces High School. The Science Engineering Communications Mathematics & Enrichment (SECME) competition this year drew 900 elementary students from roughly 60 schools. Competitions included the water bottle rocket, balsa wood bridge, generator, mousetrap car, brain bowl and others. Many thanks to the volunteers from ASCE and FES who helped to set-up and judge various competitions. The event was a terrific success as always and we are eagerly looking forward to the Middle and High School Event on April 9th.



ASCE MULTI-REGION LEADERSHIP CONFERENCE

Julie Parham and Tzufit Boyle attended the annual ASCE Multi-Region Leadership Conference in Pittsburgh, Pennsylvania February 12 and 13. Representatives from branches and sections in Florida, Georgia, South Carolina, North Carolina, Virginia, West Virginia, Pennsylvania, Maryland, DC, New Jersey, New York, Louisiana, Alabama, Tennessee, Mississippi, Arkansas, Kentucky, and Indiana attended the conference to network and hear ideas of how to help improve and expand each branch, as well as learn all of the resources available from national ASCE. We learned a great deal about how other sections communicate the results of the ASCE Report Card to legislators and the public, manage their websites, engage younger members, and the numerous tools and people available at ASCE National Headquarters in Reston, Virginia. Additional discussions centered around the need for evaluation of education requirements for the profession. We also had a chance to talk with Dr. Norma Jean Mattei, ASCE National President-Elect 2016, who will be our guest speaker at EIGN this year. It was a successful conference and we were proud to represent the Palm Beach Branch and collaborate with other branches.



IN THE NEWS

RADISE International recently hosted Gov. Rick Scott and Lt. Gov. Carlos Lopez-Cantera at the grand opening of its SMART STRUCTURES manufacturing facility in West Palm Beach, FL, which is anticipated to create over 60 new jobs in the next few years. Governor Scott presented Kumar with the Governors' Business Ambassador Award for his achievements and involvement with Enterprise Florida.

The SMART STRUCTURES technology is used globally for monitoring concrete structures and structural elements. Its Embedded Data Collector (EDC) technology allows for the monitoring of concrete structures from fabrication through the life cycle of the structure. This technology can lower project costs by reducing overbuild factors (Factors of Safety (FOS)), expediting construction time, lowering risk and increasing structural certainty. Over 100 FDOT bridge projects have been completed using EDC technology, and new projects are ongoing in Florida, Virginia, Louisiana, Texas and California. The SMART STRUCTURES technology will be complemented by RADISE's Engineering Design Group and Field Support Personnel.

Congratulations to our fellow ASCE member Kumar Allady, President of RADISE International, on this recent achievement. It should be mentioned that Kumar received the ASCE Palm Beach Branch Engineer of the Year award at the 2015 Engineers in Government Night.

More information on the ceremony and SMART STRUCTURES can be found at the following links.

<http://www.flgov.com/2016/01/25/governor-scott-announces-60-new-jobs-at-radise-international/>

- <http://www.mypalmbeachpost.com/news/business/gov-scott-praises-riviera-beach-engineering-firm-f/nqCDN/>

- www.smart-structures.com

FIELD TRIP

SFWMD L-8 Flow Equalization Basin (FEB) / Reservoir

The South Florida Water Management District (SFWMD) took us on a tour of the L-8 FEB/reservoir construction site earlier this month. The L-8 FEB/reservoir located at a retired rock quarry in Loxahatchee, Florida has a storage capacity of approx. 46,000 acre-feet (15 billion gallons) and is one of Florida's largest man-made reservoirs. When completed the L-8 FEB/reservoir will improve water quality in the Everglades by giving water managers a greater capacity to attenuate/balance stormwater flows to local stormwater treatment areas (STAs) during the wet and dry seasons. Improved attenuation/balancing of flows to these STAs, will improve the hydroperiods and the health of the aquatic vegetation in these STAs and thereby improve the capacity of these STAs to remove phosphorus from stormwater before it is conveyed to Water Conservation Area (WCA) No. 1, known as the Arthur R. Marshall Loxahatchee National Wildlife Refuge.



SOCIAL MEDIA

ASCE Palm Beach Branch is on Facebook!
 Check it out and friend the page to keep updated:
<https://www.facebook.com/ASCEPB?ref=hl>



The page features info about upcoming events, photos from past events, job postings, and a means of connecting online. If you have ideas or things to post please contact Thomas Montano (Tmontano@teamgfa.com).



ASCE MARCH 16-18 2017
SOUTHEAST
STUDENT CONFERENCE
 HOSTED BY FLORIDA ATLANTIC UNIVERSITY®

Approximately 1200 students from 26 schools will be participating in exciting engineering competitions, like the concrete canoe and steel bridge events, followed up by a job fair and an awards banquet.

For more information please visit 2017asce.fau.edu

*ASCE at FAU is hosting the **ASCE Southeast Student Conference in March 2017**. This requires a lot of planning, sponsorships & partnership with the ASCE Palm Beach Branch. Please consider becoming a sponsor to help make the event a success!*

SPONSORSHIPS

- TITLE SPONSOR \$30,000
ONE Available
- PLATINUM SPONSOR \$20,000
TWO Available
- GOLD SPONSOR \$10,000
- SILVER SPONSOR \$5,000
- BRONZE SPONSOR \$2,500

See the sponsorship details online at 2017asce.fau.edu.

SPONSORSHIP CONTACT

If you would like to partner with the FAU Department of Civil, Environmental and Geomatics Engineering for this event, please contact:

Tamsyn Carey
 Director of Development and Outreach
 College of Engineering & Computer Science
 561.297.2083
tcarey2@fau.edu



Sponsors can pay online at s.fau.edu/asce-sponsor or with a check made payable to FAU FOUNDATION, INC. with ASCE 2017 as the memo.

The portion of your payment that qualifies as a charitable contribution will be reflected on the receipt you receive from the FAU Foundation, Inc. The amount of your payment that exceeds the fair market value of any consideration you received in the form of privileges or any other benefits will be the amount that may be deductible as a charitable contribution. Consult with your tax advisor for deductibility of your charitable gift.

Job Postings

Job Title: Engineer in Training II: Civil

Location: Stanley Consultants, Inc. - West Palm Beach

Description: Stanley Consultants is an international, member-owned consulting firm providing Planning, Design, and Construction Management Services in Water, Energy, and Transportation. In 2013, we celebrated our 100th anniversary. We believe in empowering our members (employees) to achieve their professional potential.

Civil Engineering within Stanley Consultants, offers diverse and challenging opportunities that set us apart from our competitors. Our engineers work on a wide variety of projects including design and analysis of buildings and large non-building structures; from water and wastewater treatment structures to drainage and flood control structures to military facilities.

Responsibilities include:

- Perform a variety of assignments requiring the application of standard civil design engineering techniques, procedures and criteria for small projects or selected segments of larger projects.
- Preparation and checking of design computations and quantity estimates.
- Assisting senior engineering staff with: Analysis and interpretations of hydraulics, field data, drawing layouts, site layouts, and interdisciplinary coordination.
- Technical analysis in preparation of reports for engineering studies.
- Preparation of design plans and specifications for all disciplines of civil engineering design applications.
- Hydraulic modeling using the USACE HEC-RAS River Analysis software.
- Assist in client contact and communication pertaining to specific projects.
- Occasional field work and travel will be required.

Job Requirements:

- Must possess a Bachelor of Science degree in Civil Engineering AND have at least 2 years of relevant engineering experience
- Must possess EI (Engineer Intern aka EIT) registration/licensure
- Possess experience with CADD graphics software such as AutoCAD
- Must have experience with Civil 3D
- ArcGIS and numerical modeling experience is a plus
- General proficiency with computers is required
- Possess experience with Microsoft Word, Excel and PowerPoint
- Previous experience with engineering design and analysis software is a plus

Equal Opportunity Employer: Minorities, Women, Veterans, Disabilities.

How to Apply:

Our recruitment process begins with an online application. To apply, please visit our website www.stanleyconsultants.com or simply cut and paste the following link in your web browser: https://rn21.ultipro.com/sta1011/jobboard/NewCandidateExt.aspx?_JobID=2641

Job Postings

Job Title: Civil Engineering, Land Planning & Drafting Services

Location: Cotleur & Hearing, Inc. – Jupiter

Description: Provide Civil Engineering, Land Planning & Drafting services to support substation and transmission projects. Services include storm water calculations, AutoCAD and Microstation drawings, ERP permitting, land planning, NPDES plans and permitting, SPCC Plans and FDOT connection permits.

Skills required:

- Excellent communication, presentation skills and hand graphics
- Demonstrates self-motivation and the ability to work independently as well as within a team structure
- Professional registration desired

List of programs required:

- AutoCAD 2011 or later
- Microstation
- Proficient in commonly used software

Compensation: Salary and benefits are commensurate with position and qualifications

Employment type: Full-time

How to Apply: Those interested in applying should send a resume, cover letter and work samples to:

Cotleur & Hearing, Inc.

Attn: Sandra Bruorton

1934 Commerce Lane, Suite 1

Jupiter, FL 33458

Email: sbruorton@cotleur-hearing.com

Job Postings

Job Title: Highway Construction Project Engineer

Location: Ranger Construction - West Palm Beach

Description: *Posted 09.28.15* Ranger Construction is a major Florida road building, site work, asphalt and excavation contractor serving customers from the greater Orlando area through Daytona, south through the Florida Keys. The Project Engineer is responsible for assisting engineering and construction project managers with the technical disciplines involved in ensuring that projects are completed per specifications and within time and budgetary constraints. Responsibilities include schedule preparation, pre-planning and resource forecasting for engineering and other technical activities relating to the project. Develop project objectives by reviewing proposals and plans; Determine project responsibilities by identifying phases and elements when reviewing bids from contractors. Determine project specifications by studying product design, customer requirements, company standards and performance standards; complete technical studies; prepare cost estimates; Determine project schedule by studying project plan and specifications, calculating time requirements and sequencing project elements; Coordinate activities concerned with technical developments, scheduling and resolving engineering design and test problems. The position requires a Bachelor's degree, strong analytical, organization skills, as well as detail orientation and good oral and written communication skills. Ability to work under pressure and handle multiple assignments simultaneously. Ranger Construction offers a full benefit package. Please email or fax resumes to 561-792-1408. For additional company information please visit our website at www.rangerconstruction.com EOE/V/DFW

How to Apply: Contact Monique Gors at 561-784-3548 or Monique.Gors@vecelligroup.com

ASCE EWRI International Congress

Save the date for the World Environment & Water Resources Institute Congress – **May 22-25, 2016** – that is coming to WEST PALM BEACH!

Where: Palm Beach County Convention Center, West Palm Beach, FL

Visit www.ewricongress.com for more information.

ASCE Florida Section Conference

Save the date for the annual ASCE Florida Section Conference – **July 14-16, 2016**

Where: Omni Riverwalk Hotel, Jacksonville, FL

A call for abstracts will be coming out soon, so keep an eye out if you have a topic!



SPECIAL THANKS TO OUR 2016 SPONSORS

MOPS

MANUFACTURED ODORLESS PUMP STATIONS
No-Cost Design Services



ATLANTIC
ENVIRONMENTAL
SYSTEMS, INC.

2244 4th Avenue North
Lake Worth, FL 33461
(800) 806-1563
www.eMOPS.com



- Civil Engineering • Construction Management
- Environmental Design • Owner's Representative
- Program / Project Management • Site Planning

JTR

Jonathan T. Ricketts, Inc.
Consulting Engineers • Construction Managers

3450 Northlake Blvd. - Suite 200 - Palm Beach Gardens, Florida 33403
561.630.6700 fax: 561.625.2770 toll free: 877.630.6777
Florida ~ North Carolina



**CONSULTING
ENGINEERING**

PLANNING

**CONSTRUCTION
MANAGEMENT**

www.adaeng.net

A.D.A. ENGINEERING, INC.

West Palm Beach Office
1800 Old Okeechobee Road
Suite 202
West Palm Beach, FL 33409
Office (561) 615-8880
Fax (561) 615-8858

Other offices in:
Doral, Florida
Lampa, Florida

A.D.A. Engineering, Inc. is a multi-disciplined, full service engineering firm focused on performing at the highest level. Since our incorporation in 1981, ADA has been providing superior consulting engineering, planning and construction management services.

MATHEWS CONSULTING

CIVIL ENGINEERS

- Wastewater / Reuse / Water Facilities
- Streetscape / Stormwater Facilities
- Infrastructure Improvements
- Facilities Planning / Asset Management
- Value Engineering / Constructability Reviews
- Construction Management

477 S. Rosemary Avenue, Suite 330, West Palm Beach, Florida 33401
Phone: 561-655-6175 • Fax: 561-655-6179
www.matthewsconsultingllc.com

Kimley»Horn

Expect More. Experience Better.

Research ▶ Analyze ▶ Design ▶ Implement ▶ Support ▶ with Experts



Infrastructure Engineers • Software Developers

Geotechnical Engineering
Drilling Services
CEI & CMT
IT & GIS

CMEC certified,
USACE validated and
FDOT approved Testing Labs

www.RADISE.net
Serving Florida since 1997
Offices Throughout Florida







500 Australian Avenue South, Suite 530
West Palm Beach, FL 33401
Telephone: (561) 746-6900
Fax: (561) 746-8333



ENGINEERING // TRANSPORTATION // ENVIRONMENTAL // PLANNING // LANDSCAPE ARCHITECTURE // LAND DESIGN SERVICES // WATER RESOURCES // SURVEY // CREATIVE SERVICES

Offices throughout Florida | 866.909.2220 | www.wantmangroup.com



GFA International, Inc.
1215 Wallace Drive
Delray Beach, FL 33444
(561) 347-0070 Office
(561) 395-5805 Fax
www.teamgfa.com

Environmental
Geotechnical
Construction Materials Testing
Roof Consulting Services
Special & Threshold Inspections
Plan Review & Code Compliance

OFFICES THROUGHOUT FLORIDA



- ◆ Vibracoring
- ◆ Geotechnical Drilling
- ◆ Beach Renourishment QC
- ◆ Pre-Dredge Sampling
- ◆ Vessel Support
- ◆ Marine Services
- ◆ Laboratory Services
- ◆ Vibration Monitoring

1215 Wallace Drive, Delray Beach, FL 33444
561-372-0500
AmericanVibracore.com



FROM **START TO FINISH,** WE'VE GOT YOUR PROJECT **COVERED.**



ENGINEERING CONSULTING SERVICES
GEOLOGICAL • CONSTRUCTION MATERIALS • ENVIRONMENTAL • FACILITIES • THRESHOLD INSPECTION
WEST PALM BEACH • 561.849.2667 • WWW.ECSLIMITED.COM

BORED??

The CQMI (Construction Quality Management & Inspection) Committee is looking for new members.

The Construction Institute offers individuals and organizations working in all sectors of the construction industry the opportunity to network with other professionals, sharpen skills and shape the future of the industry by participating in technical activities, conferences and the development of internationally recognized standards.

Construction engineers manage the construction site and the construction process, such as; Project scheduling, Equipment selection, Mobilization of project materials, Analyzing progress, Safety planning, Quality control and inspection, Acting as liaison with the public, and Designing temporary structures.

Please send resumes to Mark Baker mbaker@ibaconsultants.com



CONSTRUCTION INSTITUTE



2015-2016 Branch Officers

PRESIDENT

Brent Whitfield, P.E.
P: 561-615-8800x202
bwhitfield@adaeng.net

VICE PRESIDENT

Julie Parham, P.E.
P: 561-840-0870
jparham@LakeWorth.org

SECRETARY

Raymond Sciortino, P.E.
P: 561-799-3855
raymond.sciortino@jacobs.com

TREASURER

Samantha Reilly, E.I.
P: 561-687-2220
Samantha.Reilly@wantmangroup.com

PAST PRESIDENT

Tzufit Boyle, P.E.
P: 561-209-6632
Tzufit.boyle@hdrinc.com

2015-2016 Committee Chairs

SCHOLARSHIP

PROGRAM CHAIR
Gregory J. Stelmack, P.E.
P: 561-841-0103
gregory.stelmack@radise.net

FAU STUDENT

ADVISOR
Natan DeLeon
P: 561-568-6442
Ndeleon2@fau.edu

2015-2016 Committee Chairs Continued

COMMUNITY OUTREACH

James Barton, P.E.
P: 954-914-8488
jbarton@fltechinc.com

Paula Fonseca, P.E.
P: 561-281-4480
pfonseca@chenmoore.com

Teresa Mills, E.I.
P: 561-746-6900x1104
tmills@chenmoore.com

K-12 OUTREACH

Cristina Chiera
P: 561-922-1087
cchiera@geosyntec.com

Marline Daceus
P: 561-840-0264
Marline.Daceus@kimley-horn.com

YOUNG MEMBERS

Vijay Mishra, E.I.
P: 561-284-5336
vkmishra@terracon.com

SOCIAL MEDIA CHAIR

Thomas Montano
P: 772-924-3575
Tmontano@teamgfa.com

SOCIAL COMMITTEE

Fattoush Jafar, P.E.
P: 561-684-4030
FJafar@pbcgov.org

WEBMASTER

Thomas Montano
P: 772-924-3575
Tmontano@teamgfa.com

FAU STUDENT CHAPTER PRESIDENT

William Lacobs
wlacobs@my.fau.edu

FAU FACULTY

ADVISOR
Dr. Frederick Bloetscher
fbloetsc@fau.edu

2015-2016 Florida Section Officers

PRESIDENT

Jose Acosta, P.E.
jacosta@chenmoore.com

PRESIDENT-ELECT

Chris Rader, P.E.
crader@altamonte.org

SECRETARY

TREASURER
Sarah Matin, P.E.
smatin@chenmoore.com

PAST PRESIDENT

Adnan Javed, P.E.
ajaved@scgov.net

DISTRICT I

VICE PRESIDENT
Marta Alonso, P.E.
malonso@hazenandsawyer.com

REGION 5

GOVERNORS
Steven Goldstein, P.E.
stevegoldstein@att.net

Peter M. Moore, P.E.
pmoore@chenmoore.com

Visit the Florida Section
online at:

www.fla-asce.org

We're on the Web!

Visit us at:

<http://branches.asce.org/palmbeach/>



Palm Beach Branch
PO Box 20456
West Palm Beach, FL 33416

Please verify/update your mailing/email information with ASCE National Headquarters
at 1-800-548-2723 (ASCE) or <http://www.asce.org/membership/>



**ASCE NEWSLETTER ADVERTISEMENT
2016
PALM BEACH COUNTY, FLORIDA**

**SPONSORSHIP & ADVERTISEMENT
FACT SHEET / INVOICE**

CIRCULATION Approximately 700+ members of the Palm Beach Branch ASCE Email List

FREQUENCY - 4 newsletters distributed electronically each quarter of 2016 (FEB / MAY / AUG / NOV)
- Advertisement on ASCE Palm Beach Branch website for 12 months of 2016

PUBLICATION SIZE 8-1/2 inches x 11 inches

COST \$100 per listing

APPROXIMATE STANDARD UNIT IN INCHES / COST:

<u>Space Units</u>	<u>Width</u>	<u>Depth</u>	<u>Cost</u>
Business Card	2.03 in	1.22 in	\$ 100

(Please fill out invoice and return with check)

INVOICE

Company Name _____ Attn. _____
Address _____ City _____ State _____ Zip _____
Telephone _____ Email _____
Payee:

Amount Enclosed _____

Send check (Payable to ASCE Palm Beach Branch) and advertisement (email preferred) to:

Raymond Sciortino, ASCE Palm Beach Branch Secretary
3300 PGA Boulevard, Suite 780
Palm Beach Gardens, FL 33410
Email: Raymond.Sciortino@jacobs.com
Phone: (561) 799-3855 (ext. 5005)



**ASCE JOB POSTING
2016
PALM BEACH COUNTY, FLORIDA**

FACT SHEET / INVOICE

CIRCULATION Approximately 700+ members of the Palm Beach Branch ASCE Email List

FREQUENCY - The next 2 newsletters distributed electronically each quarter (FEB / MAY /
AUG / NOV)
- Job posting on ASCE Palm Beach Branch website for 6 months

PUBLICATION SIZE 8-1/2 inches x 11 inches

COST \$50 per listing

INFORMATION FOR LISTING: See for reference: <http://www.palmbeach-asce.org/listings.asp>

Job Title: _____

Location: _____

Description: _____

Contact: _____

Phone: _____

Email: _____

INVOICE

Company Name _____ Attn. _____

Address _____ City _____ State _____ Zip _____

Telephone _____ Email _____

Payee:

Amount Enclosed _____

Send check (Payable to ASCE Palm Beach Branch) and job posting (email preferred) to:

Raymond Sciortino, ASCE Palm Beach Branch Secretary
3300 PGA Boulevard, Suite 780
Palm Beach Gardens, FL 33410
Email: Raymond.Sciortino@jacobs.com
Phone: (561) 799-3855 (ext. 5005)

SAVE THE DATE – APRIL 7, 2016



ENGINEERS IN GOVERNMENT NIGHT 2016

April 7 | West Palm Beach, Florida

South Florida Water Management District Headquarters
Building B-1 Auditorium, 3301 Gun Club Road, West Palm Beach, FL 33406

You are invited to an annual event that honors the accomplishments and contributions of engineers in public and private practice in Palm Beach County.

Presented By:

The American Society of Civil
Engineers, Palm Beach
Branch



Guest Speaker:

Norma Jean Mattei, PhD, P.E.
ASCE National President-Elect 2016

5:15PM – Hors D'oeuvres Reception
6:15PM – Guest Speaker & Awards Presentation

Contact Julie Parham at 561-586-1798 or
jparham@lakeworth.org for Sponsorship Opportunities or
Awards Nominations



2016 Annual Branch Awards

The Palm Beach Branch of ASCE is accepting nominations until March 18th, 2016 for the following annual awards:

- Civil Engineer of the Year
- Young Civil Engineer of the Year
- Government Civil Engineer of the Year
- Outstanding Project of the Year

Awards will be announced at the Engineers in Government Night ceremony scheduled for April 7th, 2016. The winners of the awards will be submitted to the Florida Section for further competition. Nominations should be e-mailed to Julie Parham at jparham@lakeworth.org. Please submit your nominations detailing the necessary qualifications for each award as described below.

Engineer of the Year Award: Honors an engineer who, through their activities and endeavors, has attained significant professional achievement to society and the engineering profession. This recognition is awarded to a nominee who is judged to have contributed substantially to the status of the engineering profession by:

- Personal character, integrity, and public image above reproach;
- Achievements and distinction in a technical field and mode of practice (government, education, industry, and private practice);
- An established reputation for service to ASCE and the engineering profession;
- An established reputation for civic, community, and public activities and responsibilities;
- Significant contribution toward improving the professional aspects of civil engineering education;
- Professional guidance of qualified young people who seek civil engineering as a career; and professional development of young civil engineers in the formative stages of their careers; or
- Other evidence of merit, which, in the judgment of the Awards Committee, shall have advanced the Society's professional objectives.

Young Engineer of the Year Award: Honors a younger member engineer (35 years and younger as of 2/1/15) who, through their activities and endeavors, has attained significant professional achievement to society and the engineering profession and exhibits the following:

- Personal character, integrity, and public image above reproach;
- Achievements and distinction in a technical field and mode of practice (government, education, industry, and private practice);
- An established reputation for service to ASCE and the engineering profession;
- An established reputation for civic, community, and public activities and responsibilities;
- Significant contribution toward improving the professional aspects of civil engineering education;
- Professional guidance of qualified young people who seek civil engineering as a career; and professional development of young civil engineers in the formative stages of their careers; or
- Other evidence of merit, which, in the judgment of the Awards Committee, shall have advanced the Society's professional objectives.



2016 Annual Branch Awards

Government Engineer of the Year Award: Honors a government engineer who, through their activities and endeavors, has attained significant professional achievement to society and the engineering profession. This recognition is awarded annually to members who are employed by a government agency (federal, state, local, etc), and who is judged to have contributed substantially to the status of the engineering profession by:

- Personal character, integrity, and public image above reproach;
- Achievements and distinction in a technical field and mode of practice;
- An established reputation for service to ASCE and the engineering profession;
- An established reputation for civic, community, and public activities and responsibilities;
- Significant contribution toward improving the professional aspects of civil engineering education;
- Professional guidance of qualified young people who seek civil engineering as a career; and professional development of young civil engineers in the formative stages of their careers; or
- Other evidence of merit, which, in the judgment of the Awards Committee, shall have advanced the Society's professional objectives.

Project of the Year Award: Honors a project with engineering efforts in research, design, construction or management. The award will be based on the civil engineering excellence according to the following guidelines:

- Innovative application of new or existing technology: 25%
- Future value to the engineering profession: 20%
- Social and economic considerations: 15%
- Complexity of the project: 20%
- Exceeding client needs: 20%



ASCE PALM BEACH BRANCH 2015-2016
ENGINEERS IN GOVERNMENT NIGHT (EIGN) April 7th
SPONSORSHIP FACT SHEET and INVOICE

EIGN is a night that all engineers from public and private entities come together to recognize distinguished civil engineers in Palm Beach County who have impacted the community via volunteer or other activities outside their engineering profession.

Please support the EIGN Award Ceremony and your local ASCE Branch by advertising in the publication that will be distributed during the event. Available ad sizes and prices are listed below. Please e-mail a high resolution JPG or BMP (10 MB limit) of your ad to jparham@lakeworth.org by Friday, March 18, 2016.

- Size/Price: Platinum Sponsor- 1 page- \$250**
- Gold Sponsor- 1/2 page- \$125**
- Silver Sponsor- 1/4 page- \$75**
- Bronze Sponsor - Business Card- \$50**

Contact: Julie Parham, P.E.
jparham@lakeworth.org
561-586-1798

Please fill out this invoice and mail with your payment to the address listed below. If you have any question, please contact Julie Parham.

Company Name _____

Attn: _____

Address _____

City, State, Zip _____

Phone: _____

Email: _____

We are a non-profit organization, our Tax ID # is: **23-7381284**

Please make checks payable to: **ASCE Palm Beach Branch**

Please send checks to: **Julie Parham, P.E.**
City of Lake Worth Water Treatment Plant
301 College Street
Lake Worth, Florida 33460

TESTIMONY OF
Norma Jean Mattei, P.E., M.ASCE
ON BEHALF OF
THE AMERICAN SOCIETY OF CIVIL ENGINEERS
BEFORE THE
ENVIRONMENT AND PUBLIC WORKS COMMITTEE
UNITED STATES SENATE
ON
THE WATER RESOURCES DEVELOPMENT ACT
FEBRUARY 10, 2016

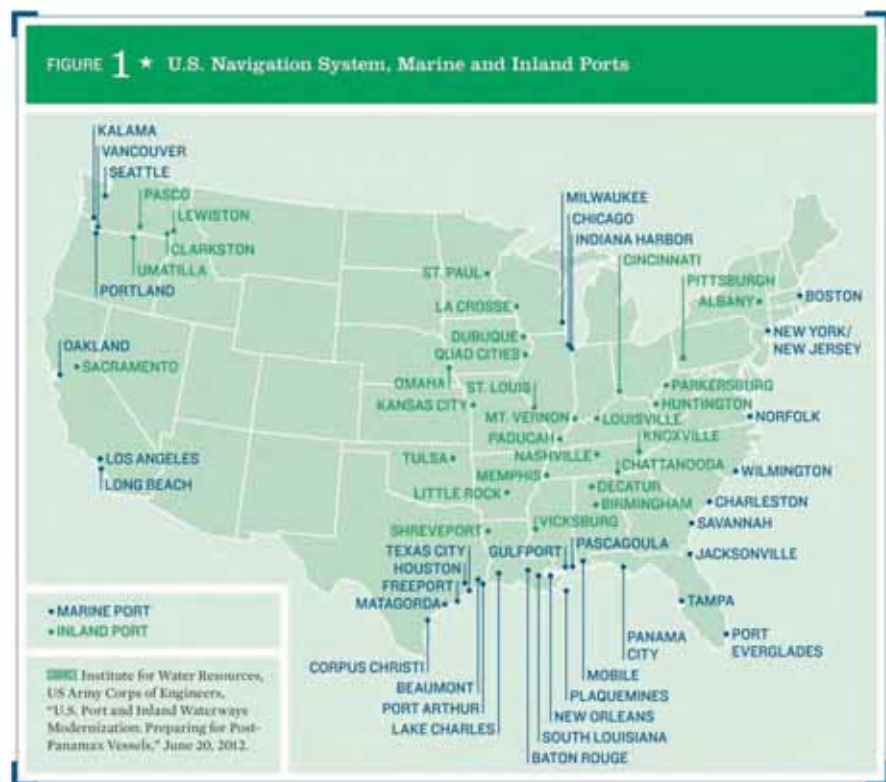
Chairman Inhofe, Ranking Member Boxer, and Members of the Committee:

It is an honor for me to appear before this committee on behalf of the American Society of Civil Engineers (ASCE)¹ to discuss the importance of water resources projects to our nation's overall economic health.

ASCE commends the Environment and Public Works Committee for holding a hearing today on the Water Resources Development Act (WRDA) and for continuing to make the legislation a priority in the 114th Congress. The Society is pleased to present to the Committee our views on the state of our nation's water resources infrastructure and to express the impact that ignoring capital improvement, operations and maintenance has on the nation's ability to compete in a global economy. In addition we are pleased to offer our views on innovative financing and the need to continuing being both stewards of the built and natural environment as we design, build and construct our nation's infrastructure. A Water Resources Development Act that fosters economic growth, job creation and the built environment will allow the nation to remain competitive and sustainable in the Twenty-First Century.

THE IMPACT OF UNDER-INVESTING IN OUR NATION'S PORTS AND INLAND WATERWAYS

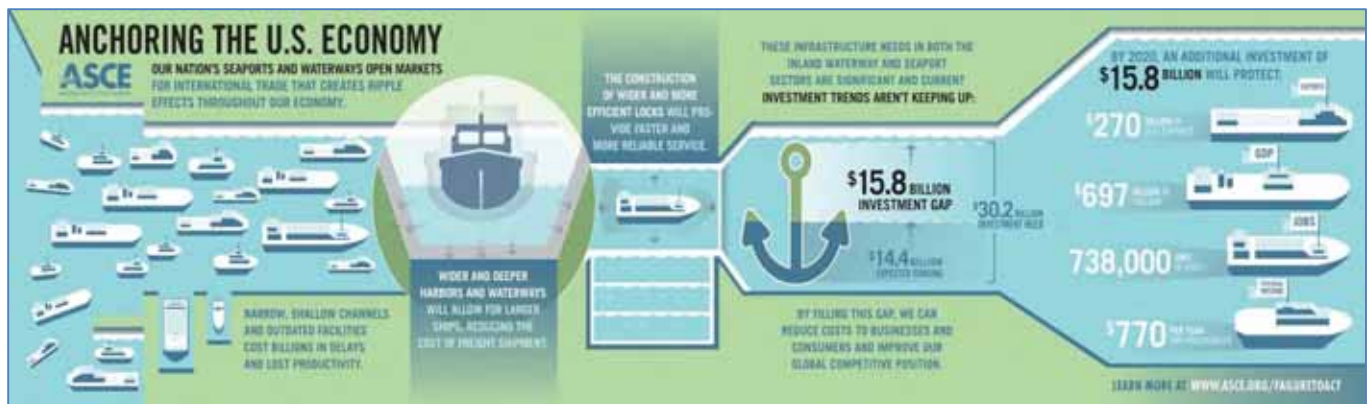
The United States has 300 commercial ports, 12,000 miles of inland and intra-coastal waterways and about 240 lock chambers, which carry more than 70 percent of U.S. imports by tonnage and just over half of our imports by value. In 2013, ASCE gave the nation's waterways infrastructure an overall grade of "D+" due to the age of many facilities and the fact that the current system of inland waterways lacks resilience. To remain competitive on a global scale, U.S. marine ports and inland waterways will require investment in the coming decades beyond the \$14.4 billion currently expected. Thankfully, with the 2014 passage of WRRDA and updates to the Harbor Maintenance Trust Fund, ports and harbors across the country can now count on an assured revenue stream to address their dredging needs. Additionally, WRRDA changes made to the Inland Waterway Trust Fund and an increase to diesel barge tax will help add and reallocate precious dollars to ensure a more robust and equitable



¹ ASCE was founded in 1852 and is the country's oldest national civil engineering organization. It represents 150,000 civil engineers individually in private practice, government, industry, and academia who are dedicated to the advancement of the science and profession of civil engineering. ASCE is a non-profit educational and professional society organized under Part 1.501(c) (3) of the Internal Revenue Code.

distribution of funds. We applaud the Committees work to update these two important infrastructure funds in WRRDA 2014.

According to ASCE’s 2012 *Failure to Act*² economic study on the nation’s marine ports and inland waterways, aging infrastructure for marine ports and inland waterways threatens more than 1 million U.S. jobs. Additionally, between now and 2020, investment needs in the nation’s marine ports and inland waterways sector will total \$30 billion, while planned expenditures are only about \$14 billion, leaving a total, federal, investment gap of nearly \$16 billion over the upcoming years. However, the costs attributable to delays in the nation’s inland waterways system were \$33 billion in 2010. These costs reverberate throughout the economy given the heavy reliance of energy inputs like petroleum and coal on inland waterway transportation. Furthermore, this cost is expected to increase to nearly \$49 billion by 2020. These costs are large, and do not even address the landside connections or the “inside the fence” infrastructure that is the responsibility of the port authority. Therefore, the nation will either need to pay for much needed investments in the nation’s ports and harbors now, or will pay more severally in lost labor, lost exports, and lost GDP down the road.



The nation’s marine ports and inland waterways have historically been the critical links that make international commerce possible. However, with the scheduled expansion of the Panama Canal by 2015, the average size of container ships is likely to increase significantly, affecting the operations of those major U.S. ports that handle containerized cargo. Currently, many of those U.S. ports will still require significant infrastructure upgrades to handle the larger ships and therefore remain competitive. The needed investment in marine ports will include harbor and channel dredging, while inland waterways will require new or rehabilitated lock and dam facilities.

TABLE 16* Lost Trade Due to the Gap in Inland Waterways and Marine Ports Investments (in billions of 2010 dollars)

YEAR OR PERIOD	EXPORTS	IMPORTS	TOTAL TRADE
2020	-42.8	-20.5	-63.3
2040	-141.6	-63.6	-205.2
2012-20	-270.1	-157.4	-427.5
2021-40	-1,711.8	-775.6	-2,487.4
2012-40	-1,981.9	-933.0	-2,914.9

SOURCE: EDR Group and LIFT model, University of Maryland, INFORUM Group, 2012.

² www.asce.org/failuretoact

If the nation makes an additional investment of \$15.8 billion between now and 2020, the U.S. can eliminate the current drag on economic growth and protect:

- \$270 billion in U.S. exports.
- \$697 billion in GDP.
- 738,000 jobs in 2020.
- \$872 billion in personal income, or \$770 per year for households.

Unless America’s infrastructure investment gaps are filled, transporting goods will become costlier, prices will rise, and the United States will become less competitive in the global market. As a result, employment, personal income, and GDP will all fall.

ENSURE THE SUCCESS OF THE NATIONAL DAM SAFETY PROGRAM AND LEVEE SAFETY INITIATIVE

In the Water Resources Reform and Development Act of 2014, Congress reauthorized the National Dam Safety Program and stood up a new National Levee Safety Initiative. The Dam Safety Program, first authorized in 1996 has for more than two decades helped inventory and assess the condition of nearly 84,000 dams across the country and provide assistance to improve state dam safety programs. Because of the program we know the average age of dams in this country is 52 years old. Nearly 14,000 of those dams are considered high-hazard, and that number continues to rise. Many of these dams were built as low-hazard dams protecting undeveloped agricultural land. However, with an increasing population and greater development below dams, the overall number of high-hazard dams continues to increase. The number of deficient dams is estimated at more than 4,000, which includes 2,000 deficient high-hazard dams. The Association of State Dam Safety Officials estimates that it will require an investment of \$21 billion to repair these aging, yet critical, high-hazard dams. We encourage the committee to use its oversight authority to ensure the program continues to produce important life-safety benefits. In addition, the next critical step of developing robust dam safety processes will require a rehabilitation program. Organizations such as ASDSO and the American Society of Civil Engineers (ASCE), with the National Dam Safety Program at FEMA, advocate strong state and federal programs, promote awareness of the need for improvement of the nation’s infrastructure, and support federal legislation to launch a dam rehabilitation financing program.

WRDA 2014 also created a National Levee Initiative, which, once funded will begin the same process the dam infrastructure underwent 20 years ago. It is estimated that there are 100,000 miles of levees in the U.S. Currently only about 10% of levees



have been inventoried and assessed. The Levee Safety Initiative provides the mechanism to expand the inventory and assessment process. We encourage the committee to continue its oversight and provide any additional policy changes or resources necessary to ensure the success of this program.

EXPLORE ALTERNATIVE FINANCING

In the Water Resources Reform and Development Act of 2014, Congress authorized the Army Corps of Engineers to study the feasibility of partnering with the private sector to deliver projects through alternative methods. ASCE recognizes and supports Public Private Partnerships (PPPs) as one of many methods of financing and delivering infrastructure improvements. ASCE supports the use of the P3 project delivery method when federal, state, or local funding is not available to address capacity or safety issues in a timely manner and the public interest is protected. Any public revenue derived from PPPs must be dedicated exclusively back to comparable infrastructure facilities in the state or locality where the project is based. Revenue and assessment of revenue should be reported annually to the general public in a public forum available to access by all. We also recommend that P3 contract's includes at a minimum performance criteria that address long-term viability, life cycle costs, return on public and private investment, takeover and turnback, projected yearly revenue, identification of responsible parties and their roles, and residual value. Transparency is a key element in all aspects of contract development, project implementation and any subsequent operation. PPPs can be an effective method of project financing and delivery. PPPs do not replace the need for public funding of infrastructure projects. ASCE supports the use of PPPs only when the public interest is protected and where professional engineers serve in responsible positions of authority regarding engineering to further safeguard the public interest.

MAXIMIZE MULTIPLE CO BENEFITS OF PROJECTS

ASCE supports and encourages project sponsors to survey co benefits that can be achieved by looking beyond a singular authorized purpose. For example, ASCE supports the use of beneficial use of dredged material. The federal government should revise its methodology for economic analysis of dredging costs to reflect gaining the benefits of using dredged material for coastal protection, environmental stewardship and other beneficial uses as well as to avoid disposal costs. Government and private entities that develop and execute projects requiring dredging be stewards for the beneficial use of dredged material. Dredged material be managed as a resource using life-cycle dredged material management plans that consider regional sediment management needs; dredging frequencies, locations, and quantities; as well as landscape use and change. Contaminated sediments, considering the contaminant and degree of contamination, be evaluated for selected beneficial uses. Any dredging plan includes a comprehensive monitoring plan that considers site requirements, beneficial uses, and environmental impacts.

Issue

RESTORE THE ENVIRONMENT

Too often the built environment can cause adverse impacts on the natural environment. Civil engineers have the training and tools necessary to ensure that projects meet their intended purpose, but do so in a manner that pays particular attention to ecosystem values. ASCE is working with members to update best practices for storm water management, flood control and coastal protection infrastructure. ASCE is focused on few issues in particular that are relevant to WRDA:

- Ensuring green infrastructure practices are fully considered in storm water management plans
- Revisiting flood control structures to maximize environmental benefits (for example, studying the potential environmental benefits of restoring wetlands in southern Louisiana using large scale sediment diversions)
- Promoting the use of shoreline protection that incorporate multiple lines of defense³, including the use of living shorelines, natural infrastructure and resilient construction practices.

³ See John Lopez, *The Multiple Lines of Defense Strategy to Sustain Coastal Louisiana, Lake Pontchartrain Basin Foundation*, 2006.

CONCLUSION

In conclusion, ASCE applauds the Senate Environment and Public Works Committee for taking strides to address our nation's aging water resources. In the 2017 Report Card ASCE will once again grade the nation's infrastructure. WRDA bills provide an important opportunity to help raise the grades.

Deferring water resource projects creates costs that reverberate throughout our economy, causing exports and GDP to fall, threatening U.S. jobs, causing a drop in personal income, and putting vessel operators at increased risk. ASCE urges Congress to continue working on WRDA bill every two years. A two year cycle provides certainty to project sponsors, keeps the price tag of the legislation manageable and can cut down on the backlog of projects. ASCE looks forward to working with the Senate Environment and Public Works Committee as you move forward on this legislation.

Thank you, Senator Inhofe. This concludes my testimony. I would be pleased to answer any questions.