

# Palm Beach Branch AUGUST 2018 NEWSLETTER

The Newsletter of the Palm Beach Branch, Florida Section of  
the American Society of Civil Engineers



## Dates to Remember:

- ♦ **September 26**  
Young Member Group Meeting
- ♦ **October 9**  
Monthly Meeting
- ♦ **October 12-15**  
National ASCE Convention (Denver)
- ♦ **October 23**  
Infrastructure Night
- ♦ **Late October**  
Joint Society Mixer
- ♦ **November 2**  
Beer for Us, Water for People
- ♦ **November 3**  
Engineering Family Fun Day
- ♦ **November 13**  
Monthly Meeting
- ♦ **December 11**  
Monthly Meeting

## Contents:

President's Message	1
Upcoming Monthly Meetings	2
Upcoming Events	3-4
Quarterly Recap	5-8
Job Postings	9-11
Sponsors	12
Contact Us	13
Job Posting Form	14
Sponsorship Form	15

## PRESIDENT'S MESSAGE

Greetings Palm Beach Branch members,

So far our notable events for Summer include Alex Vazquez's presentation about ADA's low impact master development plan for the City of Doral at our June meeting; Heath Wintz's presentation about the design & construction of the new UV light disinfection system for WPB's water treatment plant; and Nick Syriopoulos' presentation about geotechnical construction techniques at our August meeting. Our local EWRI chapter held a lunch meeting in July at SFWMD headquarters with Professor David Chin from the University of Miami, who gave a presentation about the findings of recent hydrologic studies in South Florida, and their implications for storm water management design.

In July, I attended the ASCE Florida Section annual conference and quarterly board meeting in St. Petersburg, FL on behalf of the Branch. It was a great opportunity for continuing education as well as networking with ASCE student chapters and other branches. At the conference we were honored to have Brent Whitfield, who is a long-time member and officer of our branch, receive the state-level ASCE Engineer of the Year award. Congratulations Brent!

Our Young Members Group (YMG) held a lunch meeting in June where Cody Parham gave a very informative and enjoyable presentation about the basics of airport design for civil engineers. Our YMG chairpersons, Marly Trier and Yehya Siddiqui are currently planning more YMG events for the near future. Please reach out to either of them if you are interested in participating in upcoming YMG events (their contact info

is provided with the contact info for the Branch officers and chairpersons in this newsletter).

As many of you are aware, our former Treasurer Marline Daceus relocated recently to Orlando. In accordance with our Branch's Bylaws, the Board appointed Tom Montano to become our new Treasurer and appointed Teresa Chapman to be our new Secretary for the remainder of the 2017-2018 term. As we did last year, we are holding an election during the month of September for a new Secretary, who will serve in the upcoming 2018-2019 term that begins October 1, 2018. If you are a dues paying member of the ASCE Palm Beach Branch you should have received a Constant Contact message from the Branch with a link to vote online for this year's candidates

Please feel free to contact me at any time with questions, ideas or general feedback.

Sincerely,

**Raymond Sciortino, P.E.**  
President, ASCE Palm Beach Branch  
[raymond.sciortino@jacobs.com](mailto:raymond.sciortino@jacobs.com)

### Advertising Opportunities

*Renew your Newsletter & Website Sponsorship: **\$100 for 12 months***

*Includes website & 4 newsletters to over **1400 professionals***

### Job Posting Opportunities

*Newsletter & Website Sponsorship:*

**\$50 per listing - runs for 6 months**

*Includes website & 2 newsletters to over **1400 professionals***

# Palm Beach Branch AUGUST 2018 NEWSLETTER

## PDH CERTIFICATES AVAILABLE ON WEBSITE

Please use the link below to access your **PDH certificates** for the ASCE Palm Beach Branch lunch meetings you attended since 2015 where a PDH was offered, and you provided proof of your attendance by signing the attendance sheet.

<http://branches.asce.org/palmbeach/resources>

## UPCOMING MONTHLY MEETING

### PRESENTATION SUMMARY/OUTLINE:

*Engineering.*

*Upon first consideration, it might not seem the stuff of grand cinematic adventure. But could engineering secretly be an exciting, creative, heroic realm where the optimists of today are creating the life-saving, world-altering marvels that will make for a safer, more connected, more equal and even more awe-inspiring tomorrow?*

*With an eclectic, stereotype-bursting engineer cast, the huge story told by Dream Big answers that question with a resoundingly "yes" using a series of surprising human stories to expose the hidden world behind the most exciting inventions and structures across the world. It is not only a journey through engineering's greatest wonders, but equally a tale of human grit, aspiration, compassion and the triumph of human ingenuity over life's greatest challenges.*



**WHEN:** Tuesday, October 9, 2018 from 12:00 -1:00 P.M.

**PDH:** PENDING APPROVAL

**WHERE:** Vista Center – 2300 N. Jog Road, West Palm Beach, FL 33411 (Room 1E-58)

**LUNCH COST:** Pay at meeting: \$10 cash/check or \$10 by credit card.

Pay using on-line registration at <http://branches.asce.org/palmbeach>

*Officer Installations*

*By Tzufit Boyle, District 1 Vice President*

**Please make your reservation prior to 9:30am on the day of the meeting. Contact Thomas Montano at 772-924-3575 if you need assistance.**

## UPCOMING YOUNG MEMBERS MEETING

### PRESENTER'S BIO:

*Brent Whitfield is the Director of Water Resources for Chen Moore and Associates. With 15 years of professional experience, Mr. Whitfield has worked for a variety of public sector clients at the City, County and State level. Some of his most significant projects have included regional master plans and large-scale design efforts. A highlight of his experience to date was the hydraulic design of the 4,500-acre Expansion Area 1 for Stormwater Treatment Area 1W, which will help meet the water quality goals of Everglades restoration. His current responsibilities with Chen Moore include business development, project management and detailed design.*

### PRESENTATION SUMMARY/OUTLINE:

*South Florida is a unique environment where the past present and future of development is largely dependent on the policy and infrastructure of water management. The intention of this presentation is to provide a historical and technical context for the system we have today. Starting with an introduction to why the geology and topography of South Florida necessitate a complex system to drain water for flood protection and conserve water for the environment and public water supply. The context of the environmental conditions leads to a discussion of the history of water management in South Florida and how natural disasters created a demand for major infrastructure projects and new legislative policies. The presentation then covers how these legislative policies lead to requirements for the engineering design of water management systems and an overview of those requirements. Lastly, the presentation includes a discussion of current water quality and sea level rise issues.*

**WHEN:** Wednesday, September 26, 2018 from 12:00 PM to 1:00 PM

**PDH:** 1 PDH

**WHERE:** Lake Worth Water Treatment Plant—Training Room, 301 College Street Lake Worth, FL 33460

**REGISTRATION:** [LINK](#)

# Palm Beach Branch AUGUST 2018 NEWSLETTER

## UPCOMING EVENTS - SAVE THE DATES!

### INFRASTRUCTURE NIGHT

**TUESDAY, OCTOBER 23TH, 2018**

4:00 p.m. - 8:00 p.m.

**FLORIDA ATLANTIC UNIVERSITY THEATER**

777 Glades Rd. Boca Raton, FL 33431



#### KEYNOTE SPEAKER

**Gerry O'Reilly**

Florida Department of Transportation District IV Secretary

Come network with engineers, construction professionals, faculty, alumni & students, help by highlighting the building and design industry, and obtain two (2) *Ethics for Engineers CEUs*.

#### REGISTRATION IS LIMITED, REGISTER ASAP.

The registration fee is non-refundable and will support the Civil, Environmental & Geomatics Engineering students' activities.

#### SPONSORSHIP OPPORTUNITIES

Make an impression, exhibit your products or services and ensure your branding efforts while increasing your recruiting ability, and support the civil, environmental and geomatics engineering students' activities.

#### \$1,000 PLATINUM

Booth, Sponsor provided banner behind podium, pre-event reception, logo in all marketing materials – Up to 15 representative attending

#### \$700 GOLD

Booth, pre-event reception and logo in all marketing materials – Up to 10 representatives attending

#### \$350 SILVER

Booth and pre-event reception – Up to five Representatives attending

If you have questions about the event contact Digna Mejia (561-297-2042 or [dmejia1@fau.edu](mailto:dmejia1@fau.edu)) Florida Atlantic University Department of Civil, Environmental & Geomatics Engineering



**Friday, November 2, 2018**

5:30pm to 9:30pm

The Home of Todd Bonlarron  
164 Arlington Road  
West Palm Beach, FL 33405  
Street Parking on Arlington and Gregory Roads

Live music

Food from a favorite local food truck

Donations • \$20 minimum suggested

Register Today:

[www.fsawwa.org/event/2018homebrewreg](http://www.fsawwa.org/event/2018homebrewreg)

**DID YOU KNOW?**

- Water for People volunteers design and build water supply projects all over the world
- Beer is 95% water
- In Prague, beer is cheaper than bottled water.
- Just 33% of what the world spends on bottled water every year would pay to provide clean water for the 780 million without it.

REGISTER AS A BREWER, SPONSOR, OR ATTENDEE BELOW

#### Start Brewing Today!

Brewer(s) Name: \_\_\_\_\_

Phone: \_\_\_\_\_

Email: \_\_\_\_\_

Name of Brew: \_\_\_\_\_

Style: \_\_\_\_\_

Special Ingredients/Processes: \_\_\_\_\_

For more information about entering the homebrew contest:

Contact Holly Andreotta at 352.302.9072 or [Holly@snookfoundation.org](mailto:Holly@snookfoundation.org)

#### Sponsor Today!

☐ **Platinum Sponsor** \$500.00  
With a \$500 donation, you receive a special media advertisement for "special event" (support), large logo on a rotating local screen, and four complimentary tickets.

☐ **Gold Sponsor** \$250.00  
With a \$250 donation, you receive a logo on a rotating local screen and two complimentary tickets.

Company Name: \_\_\_\_\_

Contact Name: \_\_\_\_\_

Email: \_\_\_\_\_

Phone: \_\_\_\_\_

Email Company Logo to:  
Beth McArdle • [mcardlebe@cdmsmith.com](mailto:mcardlebe@cdmsmith.com)

#### CREDIT CARD PAYMENT AUTHORIZATION

Circle one: MasterCard Visa American Express

Name on Card: \_\_\_\_\_

Card Number: \_\_\_\_\_

Exp. Date: \_\_\_\_\_ CVV: \_\_\_\_\_

Signature: \_\_\_\_\_

Amount: \_\_\_\_\_

Or pay by credit card directly at  
[www.fsawwa.org/event/2018homebrewreg](http://www.fsawwa.org/event/2018homebrewreg)

Make Checks Payable to: AWWA  
Subject Line: Beer for Us/Water for People

Mail to: 621 NW 53rd Street, Suite 265, Boca Raton, Florida 33487  
Attention: Beth McArdle • 561.571.3800 • [mcardlebe@cdmsmith.com](mailto:mcardlebe@cdmsmith.com)



# Palm Beach Branch AUGUST 2018 NEWSLETTER

## UPCOMING EVENTS - SAVE THE DATES!

### About Us

The Society of Women Engineers (SWE) and the American Society of Civil Engineers (ASCE) are 501(c)(3) non-profit educational and service organizations.



SWE's mission is to stimulate women to achieve full potential in careers as engineers and leaders, expand the image of the engineering profession as a positive force in improving the quality of life, and demonstrate the value of diversity.



Palm Beach Branch

Through the expertise of its active membership, ASCE is a leading provider of technical and professional conferences and continuing education, the world's largest publisher of civil engineering content, and an authoritative source for codes and standards that protect the public.

The Society advances civil engineering technical specialties through 9 dynamic Institutes, and leads with its many professional- and public-focused programs.

The SWE and ASCE membership is approximately 180,000 members globally.

### SWE and ASCE Events

#### SWE

Girl Scouts Engineering Workshops  
Professional Development Seminars  
Eco-Action Workshops at the Jupiter River Center  
Scholarship Program for College Freshmen

#### ASCE

Engineers in Government Night  
Bowlation to Benefit College Scholarships  
Joint Societies Networking Events  
Educational Field Trips  
Licensure Continuing Education Courses

### Student Volunteer Hours

For more information contact Brent Whitfield  
Email: bwhitfield@chenmoore.com

### SWE and ASCE Leadership Teams

#### SWE-Southeast Florida Section Executive Board

Angela Foreman	President
Jenni Hiseck	Vice President
Kim O'Donnell	Treasurer
Patricia Campbell	Secretary/Data Officer
Sally Nemes	Webmaster

#### ASCE Executive Board

Raymond Sciortino	President
Vijay Mishra	Vice President
Thomas Montano	Treasurer
Teresa Chapman	Secretary
Julie Parham	Past President

### Example Activities

Bottle Rocket  
Gum Drop Dome  
Robotics Demonstrations  
Paper Cars  
Pop-Fly Launcher  
Lemon Power Battery  
Robot Makers  
Penny Watercraft  
Unpopable Balloon



For more information contact

swe.seff@gmail.com or visit us on the web,

seff.swe.org



## ENGINEERING FAMILY FUN DAY

**SATURDAY**  
**November 3, 2018**

**DREHER PARK**  
**1301 SUMMIT BLVD**  
**WEST PALM BEACH**  
(Park is across the street from Dreher Park Zoo)

Jointly presented by  
the local chapters of the  
**Society of Women Engineers**  
and  
**American Society of Civil Engineers**



Palm Beach Branch

The SWE Southeast Florida Section and ASCE are proud to join efforts and organize "Engineering Family Fun Day" for Palm Beach County students. The objective of this event is to educate the community on the opportunities available in an engineering education and inspire an interest in the areas of math and science in young students in Palm Beach County. Our intent is to increase the students' as well as their parents, teachers, and counselors' knowledge of engineering and other technical fields.



If you are interested in this sponsorship opportunity that is valuable to your company and the students of Palm Beach County, please complete the following information and return the form and sponsorship check to:

**SEFL Society of Women Engineers**  
c/o Kim O'Donnell  
688 Fern Street  
West Palm Beach, FL 33401



Company Name: \_\_\_\_\_  
Contact Person: \_\_\_\_\_  
Address: \_\_\_\_\_  
Phone: \_\_\_\_\_  
Email: \_\_\_\_\_  
Sponsorship Level: \_\_\_\_\_

### Sponsorship Opportunities

Being an EF²D booth sponsor benefits your company in the following ways:

- ✓ Hands-on involvement with local school children
- ✓ Exposure in the community as an engineering leader
- ✓ Networking with other organizations and businesses
- ✓ A named partner and supporter of the scholarship and community service programs of SWE and ASCE

**Platinum (Celestial) \$750**

- Your company logo on all promotional material
- Booth at the event
- Banner for the booth
- Link to company website from SWE website

**Gold (Molecular) \$500**

- Your company logo on all promotional materials
- Booth at the event
- Link to company website from SWE website

**Silver (Reactive) \$250**

- Your company name on all promotional materials
- Booth at the event

**Bronze (Atomic) \$100**

- Your company name on all promotional materials

The event will involve booth set-ups from diverse engineering companies, engineering organizations, and local sponsors. Each sponsored booth will present a hands-on engineering related activity by which the students, parents, and engineers can interact with each other.

We are asking your company to be a booth sponsor for this event. The following is information about sponsorship opportunities. Money raised from this event will be used for the scholarship and community service projects that both SWE and ASCE are proud to provide for the community.



**EF²D**

**November 3, 2018**

**10AM - 2PM**

**Location: Dreher Park**  
**West Palm Beach**

# Palm Beach Branch AUGUST 2018 NEWSLETTER

## QUARTERLY RECAP - ASCE MONTHLY MEETINGS

**SEPTEMBER 11, 2018**

### **PRESENTER'S BIO:**

The presentation will be given by Troy Bishop, P.E., G.C. As a licensed Florida Professional Engineer and General Contractor, Troy Bishop's passion for helping people has allowed him to successfully handle leadership responsibilities throughout his career while his technical expertise in high-velocity hurricane environments has garnered him praise with national clientele. In 2015 he founded Axiom Structures to assist architects, contractors, and the general public with field inspection reports of in-progress construction, value-engineered structural designs, and project development. He has broad experience in numerous aspects of physical design and building, renovations, inspections, technology implementation, and design efficiency. His direct familiarity with investors, owners, architects, manufacturers, contractors, and building officials has given him skill not only as a forward-thinking entrepreneur, but as a consulting professional who can understand and work through the complications of designing and building in South Florida.

### **PRESENTATION SUMMARY/OUTLINE:**

Troy Bishop was a responder in the Keys performing damage assessment following Hurricane Irma. This presentation will review the causes and signs of structural damage from hurricanes and hurricane force winds, examine structural failure modes noted after the Hurricane Irma, and discuss the first deployment of the SEER program in Florida following Hurricane Irma.



**AUGUST 14, 2018**

### **PRESENTER'S BIO:**

The presentation will be given by Nick Syriopoulos, who is a Business Development Manager for Hayward Baker Inc, in Hollywood, FL. He is a member of ASCE and holds a BS and MS in Civil/Geotechnical Engineering from Georgia Tech. Mr. Syriopoulos has 30 years geotechnical construction engineering and management experience. He is specialized in ground improvement methods, specialty grouting, as well as underpinning and excavation support. In the past, he has managed 2 Industrial Minerals companies overseas.

### **PRESENTATION SUMMARY/OUTLINE:**

The presentation will provide an overview of different geotechnical construction techniques, with case histories. They include specialty grouting techniques, Vibro systems, Rigid Inclusions, Soil Mixing, deep excavations and Bottom Plugs for underground parking garages, sheet piles and tieback anchors.



**JULY 10, 2018**

### **PRESENTER'S BIO:**

The presentation will be given by Heath Wintz, P.E., who is a lead environmental engineer at Stantec, Inc. After attending the University of Florida, Heath has focused on utility projects throughout Palm Beach, Martin and Dade Counties. Over the past 14 years, Mr. Wintz has design and constructed processes for the treatment and disinfection of potable water, wastewater and reclaimed water. He is currently focused on construction of the UV treatment facility and Powdered Activated Carbon contact basin at the City of WPB WTP, and engineer of record for design of the Deep Injection Wells as part of the Miami-Dade WASD Ocean Outfall Legislation program. Heath is an occasional triathlete, retired cave diver, and is currently learning to kite surf.

### **PRESENTATION SUMMARY/OUTLINE:**

Project background & West Palm Beach Water Supply. Design of the Water Treatment Process & UV Disinfection system for City's Plant Construction. Challenges. Lessons Learned.



**JUNE 12, 2018**

### **PRESENTER'S BIO:**

Mr. Vazquez has over 30 years of Civil and Water Resources engineering experience specializing in one and two dimensional hydrologic/hydraulic modeling; water quality modeling; stormwater management master plan development; site development; and analysis, design and permitting of drainage infrastructure systems. Mr. Vazquez has developed or updated stormwater management master plans ranging from several hundred acres to 1,000 square miles. He has also analyzed, designed and permitted a wide-variety of drainage systems such as gravity stormwater collection and disposal systems, low impact development best management practices, exfiltration trenches, gravity and injection drainage wells, stormwater pump stations, pollution control structures, detention/retention ponds, and stormwater treatment areas. He is currently involved in several drainage studies and stormwater management master plan projects to address future impacts and mitigation of projected sea level and ground water rise, including the update of the City of Delray Beach Stormwater Management Master Plan Update to address sea level rise resiliency.

### **PRESENTATION SUMMARY/OUTLINE:**

The presentation will provide an overview of the City of Doral Low Impact Development (LID) Master Plan to assist the City in maximizing implementation of LID Integrated Management Practices. These practices will minimize impacts from anticipated new development and/or redevelopment projects. The Master Plan will also provide guidance for LID site planning, hydrologic/hydraulic analyses, and erosion and sediment control practices. The LID Master Plan is currently being used by the City Planning and Zoning Department in revising the land development codes to promote uses of applicable LID BMPs for future development of redevelopment projects.





# Palm Beach Branch AUGUST 2018 NEWSLETTER

## QUARTERLY RECAP - YOUNG MEMBER MEETINGS

**JUNE 15, 2018**

*The Young Members kicked off summer with the inaugural YMG Beach Volleyball Tournament. No amount of rain stopped the tournament from going full steam. Free pizza after the event was a bonus! .*



**JUNE 27, 2018**

### **PRESENTER'S BIO:**

*The presentation will be given by Cody Parham, P.E., who is a civil engineer and project manager for HDR, Inc. Cody holds a Bachelor of Science in Civil Engineering from the Georgia Institute of Technology and is a registered Professional Engineer in Florida. Cody has 11 years of experience in airport planning, design, and construction. His experience includes airfield layout, pavement analysis, stormwater, utilities, and markings and signage. His major leadership roles include the LEED certified Customs and Border Protection facility at Fort Lauderdale Executive Airport, the Rehabilitation of Runway 4-22 at the Blue Grass Airport, the Airfield Rehabilitation Program at Palm Beach International Airport, and the rehabilitation of Runway 10L-28R at the Fort Lauderdale International Airport.*



### **PRESENTATION SUMMARY/OUTLINE:**

*The presentation will cover the basics of the civil engineering components of airport design. The following is an outline of the presentation.*

- *Authorities having jurisdiction*
  - *Airport Owner*
    - *Airport Authority*
    - *Municipality*
  - *FAA*
  - *Department of Defense*
  - *Department of Transportation*
- *Operational Security*
  - *Airfield Operations Area*
  - *Security Identity Display Area*
  - *Sterile/Non-sterile areas*
  - *Runway/Taxiway Safety Areas*
- *Fundamentals of geometric design*
  - *Critical aircraft*
  - *Runway designations*
  - *Taxiway Intersections*
- *Aviation pavement design*
  - *HMA*
  - *PCC*
- *Airfield stormwater management*
- *Construction phasing*

# Palm Beach Branch AUGUST 2018 NEWSLETTER

## QUARTERLY RECAP - EWRI MEETINGS

**JULY 24, 2018**

### **PRESENTER'S BIO:**

David A. Chin is a Professor of Civil and Environmental Engineering at the University of Miami. He is a registered professional engineer in Florida, with graduate degrees in civil engineering from Georgia Tech (PhD) and Caltech (MS).

### **PRESENTATION SUMMARY/OUTLINE:**

This seminar discusses three common practices in engineering hydrology that have traditionally been used in south Florida, but could be updated to reflect the state-of-the-art. The hydrologic practices to be covered include specification of design rainfall distribution(s), calculation of runoff from rainfall, and design of exfiltration trenches. Limitations of existing methods in these areas will be reviewed, and corresponding state-of-the-art methods will be presented.



**ASCE** LIBRARY

SEARCH CART LOG IN / REGISTER

JOURNALS BOOKS ▾ MAGAZINE AUTHOR SERVICES USER SERVICES

### Journal of Irrigation and Drainage Engineering

#### Aims & Scope

The *Journal of Irrigation and Drainage Engineering* covers all phases of irrigation, drainage, engineering hydrology, and related water management subjects, such as watershed management, weather modification, water quality, groundwater, and surface water. The journal emphasizes new developments and results of research, as well as case studies and practical applications of engineering.

#### Editorial Board

##### Editor:

Garry Grabow, Ph.D., P.E., North Carolina State University

##### Associate Editors:

Eduardo Bautista, Ph.D., USDA-ARS U.S. Arid Land Agricultural Research Center  
Eban Bean, Ph.D., P.E., M.ASCE, University of Florida  
Gilles Belaud, Ph.D., Montpellier SupAgro  
Michael D. Dukes, Ph.D., P.E., University of Florida  
Seyed Hajimirzaie, Ph.D., P.E., P.H., South Florida Water Management District  
Charles Hillyer, Ph.D., Texas A&M University  
Luciano Mateos, Ph.D., Instituto de Agricultura Sostenible, CSIC  
Antonio Miglio, Ph.D., P.Eng., M.ASCE  
Giuseppe Oliveto, C.Eng., Ph.D., M.ASCE, University of Basilicata  
Om Prakash, Ph.D., P.E., QSD, M.ASCE, WEST Consultants, Inc.  
Rajat Saha, Ph.D., P.E., M.ASCE, MBK Engineers  
Stuart Styles, D.E., P.E., Irrigation Training & Research Center  
Saleh Taghvaeian, Ph.D., A.M.ASCE, Oklahoma State University  
Bridget Wadzuk, Ph.D., Villanova University

**Seyed "Haji" Hajimirzaie has been appointed as  
Associate Editor to the  
Journal of Irrigation and Drainage Engineering!  
Congratulations!**

# Palm Beach Branch AUGUST 2018 NEWSLETTER

## ASCE FLORIDA SECTION CONFERENCE



**80**

TECHNICAL  
SESSIONS

**118**

PROFESSIONAL  
SPEAKERS

**12+**

POTENTIAL PDHS  
+LAWS & ETHICS

**3**

TECHNICAL  
TOURS

**2**

COCKTAIL  
RECEPTIONS

**2**

DAYS OF  
NETWORKING

In mid July, members from around the state gathered at the Vinoy hotel in St. Petersburg for the Florida Section's Annual Conference. This year's format was a little different, as sessions began mid-morning on Thursday, and wrapped at the end of the day on Friday. We had some great exhibitors in attendance, and were able to provide many PDHs for our members, including the two mandatory laws and ethics hours. The historic venue itself was fantastic, and many of our members brought their families to enjoy the resort and surrounding areas.

On Friday, the new Executive Board was installed. Our new President for the Section is Rachel Haeseler, with Chris Sharek advancing from District VP to President-Elect. I was reinstalled for the second half of my term. We also awarded the Section's Engineer of the Year to Brent Whitfield of the Palm Beach Branch! It is a pleasure to serve the Palm Beach Branch's interests at the Section Level, and I welcome input from any of the branch's membership.

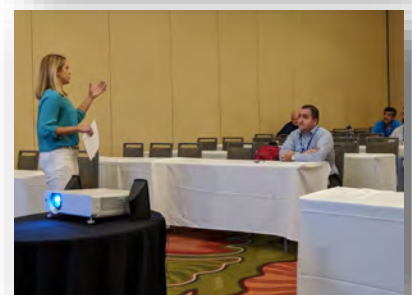
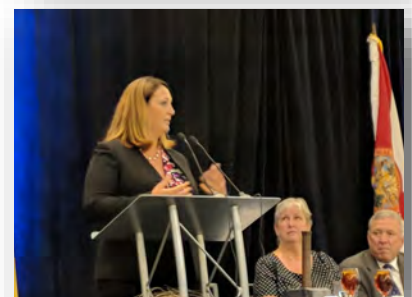


Thanks!

Tzufit Boyle  
District 1 Vice President,  
ASCE Florida Section

**"Being active in ASCE has really been a career changing experience. It was such an honor to win the Section Award and a genuine privilege to have my family with me."**

**- Brent Whitfield**





# Palm Beach Branch AUGUST 2018 NEWSLETTER

## JOB POSTINGS

Position: **PROFESSIONAL ENGINEER (ID 13935)**

Salary: \$74,907 Annually, negotiable depending on qualifications

Department: Engineering and Public Works/Roadway Production

Location: 2300 N. Jog Road, West Palm Beach

Hours: 8:00 A.M. to 5:00 P.M., Monday - Friday

Other: Valid Florida Driver's License and PBC Risk Management Department driving history approval prior to appointment.



**THIS IS AN AT-WILL POSITION.**

Plans, coordinates, reviews and approves the work of professional and technical staff in the Roadway Production Division. Negotiates Palm Beach County (PBC) design contracts with consultants and reviews both major and minor roadway and bridge design plans prepared by consultants. Assists in preparation of contract documents for bidding and construction of County roads and bridges; coordinates and approves field adjustments during construction; reviews and approves construction shop drawings; coordinates permit applications and information to obtain all necessary construction permits. Signs and seals in-house designs and modifications for County roadway improvement projects; assists in coordination with utility companies to address utility conflicts with proposed road and bridge designs in order to accommodate necessary relocation and/or adjustments of existing utility lines and the installation of new utility lines and structures. Performs permit reviews for drainage, right-of-way and utility permits through E-permitting. Prepares Cost and Feasibility Studies and designs pathways in coordination with the County Traffic Division. Prepares petitions and plans for the County's Municipal Service Taxing Unit program. Coordinates, prepares agreements and processes pay applications with various railroad entities within the County. Assists in the preparation of plans and exhibits for right-of-way acquisition and the general right-of-way acquisition process. Responds to inquiries from the public as well as other County Divisions.

### **QUALIFICATIONS:**

Bachelor's Degree in Civil Engineering OR Licensed as a Professional Engineer (PE) in the State of Florida (FL); minimum of four (4) years of experience in professional civil engineering with emphasis on roadways and highways. Equivalency: Related Master's Degree and three (3) years of related *experience*.

### **NECESSARY SPECIAL REQUIREMENT:**

Licensed as a PE in the State of FL or licensed as a PE in another state and must obtain State of FL PE licensure within 11 months of hire.

### **PREFERENCE FOR EXPERIENCE:**

As a PE in the State of FL working on roadways and highways; in structural and drainage design; working with local government agencies or FL Department of Transportation (DOT); working with FL Green Book, FL DOT Standard Specifications for Road and Bridge Construction, FL DOT Roadway and Traffic Design Standards and American Association of State Highway and Transportation Officials (AASHTO) Green Book.

**NOTE: It is not necessary to submit another application for this position if you applied 5/29/18—6/8/18.**

# Palm Beach Branch

## AUGUST 2018 NEWSLETTER

### JOB POSTINGS

#### Survey Crew Chief: Years' Experience: 1 - 3 years Mandatory

**Typical Duties and Responsibilities:** Using prescribed methods, executes specific, field related assignments as requested. Applies standard practices and techniques in specific situations, collects data, keeps proper field notes, recognizes, evaluates and solves discrepancies in results, and follows operations through a series of related detailed steps or processes; perform mathematical calculations and read and understand plans and specifications; know principles of documentation, staking and marking. Candidate is responsible for the organization and cleanliness of the survey equipment, the equipment room, and all survey vehicles.

**Responsibility for Direction of Others:** Under direction, coordinates the activities of the field survey party, and would be responsible for the effective performance, training, and safety of all members of a field survey party. Additional duties may include any task as directed by a supervisor.

**Education / Training:** Must have at least 3 years prior experience in Land Surveying as a crew chief, with construction layout, topographic and boundary surveying, must have experience with both traditional and G.P.S. surveying equipment, must have good trouble shooting skills, work well with surveypro, Topcon and Trimble instruments. Candidate must have good written and verbal communication skills. C.S.T. certification or ability to obtain certification within one year is preferred but not required. Must have clean Florida Driver's license to drive company vehicles.

EMPLOYMENT OFFERS CONTINGENT UPON A NEGATIVE DRUG TEST AND A CLEAN DRIVING RECORD.



#### Field Survey Crew Instrument Operator

**Typical Duties and Responsibilities:** Using prescribed methods, executes specific, field related assignments as requested by Crew Chief. Applies standard practices and techniques in specific situations, collects data, keeps proper notes, recognizes discrepancies in results, and follows operations through a series of related detailed steps or processes. Responsible for the organization and cleanliness of the survey equipment, the equipment room, and all survey vehicles. Additional duties may include any task as directed by a supervisor.

**Education / Training:** Must have at least 2 years prior experience in Land Surveying. CST certification a plus, but not mandatory. Must have valid Florida Driver's license.

EMPLOYMENT OFFERS CONTINGENT UPON A NEGATIVE DRUG TEST AND A CLEAN DRIVING RECORD.

#### Project Surveyor

**Job Description:** We are seeking an individual with great work ethic and an ability to motivate themselves as well as coworkers towards meeting project deadlines with minimal oversight in a fast paced environment. The candidate must display problem solving skills while always looking out for the clients' best interest. The desired candidate will have experience in design surveys, construction staking, record drawings, boundary and topographic survey, sketch and legal descriptions, plat preparations and elevation certificates. Each day will present new and exciting jobs and opportunities to interact with various clients.

**Key Responsibilities:** Ability to make accurate and neat drawings, knowledge of advanced mathematics and surveying, knowledge of drafting and surveying principles, skilled in the use of AutoCAD Civil 3D to generate a final deliverable to the client, ability to coordinate with field crews and survey technicians to establish project responsibilities, priorities and deadlines, ability to analyze specifically assigned problems, gather and organize the pertinent data and arrive at valid conclusions, ability to provide quality assurance and quality control of various survey projects, must be prepared to meet with or have conference calls with clients, must be up to date with governmental requirements for surveying documents.

**Job Requirements:** Must be self-motivated, licensure as a Professional Surveyor and Mapper in the State of Florida or ability to obtain licensure within 12 months, 4+ years of survey experience, Associate or Bachelor Degree preferred, but not required, strong verbal and written communication skills of the English language, must understand the importance of project budget and deadline constraints, ability to work independently as well as with office staff and field crew personnel, resourceful problem solver focused on attention to detail and accuracy, excellent organizational and time management skills, ability to work on several jobs simultaneously, proficient with AutoCAD Civil 3D versions 2004 through 2018, working knowledge of field coding and automated line work, proficient with Microsoft Office Software, valid Driver's License, must pass drug test, background test and must have a satisfactory driving record in accordance with the Company's driving policy.

If interested, please email [bjackson@engenuitygroup.com](mailto:bjackson@engenuitygroup.com)  
with an attached resume and contact information.

# Palm Beach Branch AUGUST 2018 NEWSLETTER

## JOB POSTINGS



**Solid Waste Authority**  
**Human Resources Department**  
7501 North Jog Road  
West Palm Beach, FL 33412  
(561) 640-4000 phone  
(561) 471-5165 fax

### Environmental Project - Manager I

Location:	Administration Building West Palm Beach, FL 33412	Days Worked:	Mon., Tue., Wed., Thu., Fri.
Department:	ENVIRONMENTAL PROGRAMS	Hour Per Week:	40
Job Status:	Full-Time Shift: 8:00 AM - 5:00 PM	Details:	(\$58,814.20 - \$85,280.59 Starting Range) (\$111,746 Salary Max)
Status:	Open until filled		

**Job Description** Environmental Project Manager is responsible for efficiently managing environmental projects relating to hydrogeology, environmental monitoring, deep well injection, industrial supply well systems, air quality, ash management, mitigation, and other areas relating to solid waste management facilities. Duties may include coordinating and acting as liaison between various Authority departments, Regulatory Agencies, Consultants, Contractors, and Sub-contractors in order to expedite the timely planning, design, data collection and completion of Authority environmental projects. Further responsibilities include performing various related contract administration activities, preparing reports, reviewing data, and performing field inspections on various environmental projects.

Bachelor's degree from an accredited college or university with major course work in Engineering (preferably environmental or civil), Biology, Chemistry, and/or Geology. At least five (5) years in Project Management or a combination of training, experience and education which provides the required knowledge, skills and abilities.

Registration as a Profession Engineer (P.E.) or a Professional Geologist (P.G.) in the State of Florida is required for this position. Project Management Professional (PMP) Certification from the Project Management Institute is preferred. If the applicant is not PMP certified, he/she must be able to obtain PMP certification within 1 year of hire date. Florida Operator's License with clean driving record that meets policy as established by the Office of Risk Management.

Starting salary depends on qualifications and experience. SWA offers an exceptional benefits package including medical, dental, life insurance, vision plan, educational assistance, paid holidays, paid sick, paid vacation and retirement benefit through Florida Retirement System (FRS).

#### ESSENTIAL DUTIES AND RESPONSIBILITIES:

1. Conduct site investigations, collect, process, evaluate and interpret data for preparing environmental reports, feasibility studies, and work plans for various environmental projects.
2. Provide technical assistance for project design; prepare work plans, technical reports, and progress reports for environmental projects performed either with Authority personnel or through outside contractors.
3. Oversee Consultants, Contractors, Suppliers and Vendors for planning, scheduling, and efficient completion of environmental projects.
4. Prepare internal reports for staff members and analyze project progress reports in accordance with Authority operations.
5. Monitor work progress on projects by performing field investigations on activities to assure compliance with project standards as per financial requirements, contracts, permits, environmental regulations, and guidelines.
6. Manage other procedures of environmental projects, such as planning, developing schedules, preparing budgets, acquiring cost estimates as per the Authority's procurement guidelines, and tracking of finances to comply with budget.
7. Assist in preparation of Requests for Proposals and Scope of Work development for Consultant Service Agreements and/or Purchase Orders.
8. Process payments to Consultants and Contractors; review project schedules, pay requests, change orders; maintains record documents.

**QUALIFICATIONS:** To perform this job successfully, an individual must be able to perform each essential duty satisfactorily. The requirements listed below are representative of the knowledge, skill, and/or ability required. Reasonable accommodations may be made to enable individuals with disabilities to perform the essential functions.

1. Advanced written and oral skills required to coordinate at all organizational levels.
2. Ability to manage the work of consultants and contractors toward the successful completion of the assigned projects.
3. Ability to handle multiple and complex projects in a timely manner with accurate results.
4. Ability to effectively communicate with regulatory agencies and technical groups.
5. Advanced problem solving skills with ability to devise new approaches for solving complicated environmental matters.
6. Working knowledge of environmental law and regulations in solid waste management.
7. Ability to use PC computer equipment, databases, scheduling software and proficient in Microsoft office (outlook, word, excel, PowerPoint).
8. Knowledge of sound program management techniques and contract administration.

**EDUCATION and/or EXPERIENCE:** A Bachelor's degree from an accredited college or university with major course work in Engineering (preferably environmental or civil), Biology, Chemistry, and/or Geology. At least five (5) years in Project Management or a combination of training, experience and education which provides the required knowledge, skills and abilities.

**CERTIFICATIONS AND LICENSES:** Registration as a Profession Engineer (P.E.) or a Professional Geologist (P.G.) in the State of Florida is required for this position. Project Management Professional (PMP) Certification from the Project Management Institute is preferred. If the applicant is not PMP certified, he/she must be able to obtain PMP certification within 1 year of hire date. Florida Operator's License with clean driving record that meets policy as established by the Office of Risk Management.

**LANGUAGE SKILLS:** Ability to read, analyze, and interpret common scientific and technical journals, financial reports, and legal documents. Ability to respond to common inquiries or complaints from customers, regulatory agencies, or members of the business community. Ability to write speeches and articles for publication that conform to prescribed style and format. Ability to effectively present information to top management, public groups, and/or boards of directors.

**MATHEMATICAL SKILLS:** Ability to apply advanced mathematical concepts such as exponents, logarithms, quadratic equations, and permutations. Ability to apply mathematical operations to such tasks as frequency distribution, determination of test reliability and validity, analysis of variance, correlation techniques, sampling theory, and factor analysis.

**REASONING ABILITY:** Ability to define problems, collect data, establish facts, and draw valid conclusions. Ability to interpret an extensive variety of technical instructions in mathematical or diagram form and deal with several abstract and concrete variables.

**PHYSICAL DEMANDS:** The physical demands described here are representative of those that must be met by an employee to successfully perform the essential functions of this job. Reasonable accommodations may be made to enable individuals with disabilities to perform the essential functions. While performing the duties of this job, the employee is frequently required to use hands to finger, handle, or feel; reach with hands and arms; and talk or hear. The employee is occasionally required to stand; walk; sit; climb or balance; stoop, kneel, crouch, or crawl; and taste or smell. The employee must occasionally lift and/or move up to 20 pounds. Specific vision abilities required by this job include close vision, distance vision, peripheral vision, depth perception, and ability to adjust focus.

**WORK ENVIRONMENT:** The work environment characteristics described here are representative of those an employee encounters while performing the essential functions of this job. Reasonable accommodations may be made to enable individuals with disabilities to perform the essential functions. While performing the duties of this job, the employee is occasionally exposed to wet and/or humid conditions; moving mechanical parts; high, precarious places; fumes or airborne particles; toxic or caustic chemicals; outside weather conditions; risk of electrical shock; explosives; risk of radiation; and vibration. The noise level in the work environment is usually loud.



# Palm Beach Branch AUGUST 2018 NEWSLETTER

## 2017-2018 SPONSORS

### JACOBS

Deerfield Beach  
Jacksonville  
Miami  
Orlando  
Palm Beach Gardens  
Tallahassee  
Tampa



SFWMD L-3 RESERVOIR PROJECT

[www.jacobs.com](http://www.jacobs.com)

Airports/Port Facilities ■ Bridges/Tunnels ■ Construction/Program Management  
Design-Build ■ Highway Design ■ ITS/Traffic Engineering ■ Transit ■ Water/Wastewater Design

### MOPS

#### MANUFACTURED ODORLESS PUMP STATIONS

No-Cost Design Services



**A**TLANTIC  
**E**NVIRONMENTAL  
**S**YSTEMS, INC.

2244 4th Avenue North  
Lake Worth, FL 33461  
(800) 806-1563

[www.eMOPS.com](http://www.eMOPS.com)



## Kimley»Horn

88 Offices Nationwide • 13 Offices in Florida

Aviation • Environmental • Intelligent Transportation Systems

Landscape Architecture • Land Planning • Roadway Design

Sustainable Design • Transit • Transportation

Urban Redevelopment • Water Resources

[www.kimley-horn.com](http://www.kimley-horn.com)  
561-845-0665

Research ▶ Analyze ▶ Design ▶ Implement ▶ Support ▶ with Experts



**Geotechnical Engineering  
Drilling Services  
CEI & CMT  
IT & GIS**

CMEC certified,  
USACE validated and  
FDOT approved Testing Labs

[www.RADISE.net](http://www.RADISE.net)  
Serving Florida since 1997  
Offices Throughout Florida



### GFA INTERNATIONAL, INC



★ Geotechnical

★ Environmental

- ★ Construction Materials Testing
- ★ Threshold & Special Inspections
- ★ Plan Review & Code Compliance

800.226.7522

**TEAMGFA.com**

*Offices Throughout Florida*



- Vibracoring
- Geotechnical Drilling
- Beach Renourishment QC
- Pre-Dredge Sampling
- Vessel Support
- Marine Services
- Laboratory Services
- Vibration Monitoring

1215 Wallace Drive, Delray Beach, FL 33444

561-372-0500

[AmericanVibracore.com](http://AmericanVibracore.com)

**Resourceful. Responsive. Reliable.**

## Terracon

1225 Omar Road | (561) 689 4299

[Terracon.com/west-palm-beach](http://Terracon.com/west-palm-beach)

Environmental ■ Facilities ■ Geotechnical ■ Materials

**IS YOUR NETWORK  
PROTECTED?**

**NetOne Technologies**

**561.432.7823**

[NetOneTech.com/Security](http://NetOneTech.com/Security)

# Palm Beach Branch AUGUST 2018 NEWSLETTER

## 2017-2018 Branch Officers

### **PRESIDENT**

Raymond Sciortino, P.E.  
P: 561-799-3855  
[raymond.sciortino@jacobs.com](mailto:raymond.sciortino@jacobs.com)

### **VICE PRESIDENT**

Vijay Mishra, P.E.  
P: 561-682-2810  
[vimishra@sfwmd.gov](mailto:vimishra@sfwmd.gov)

### **TREASURER**

Thomas Montano, P.E.  
P: 772-204-4239  
[tmontano@teamgfa.com](mailto:tmontano@teamgfa.com)

### **SECRETARY**

Teresa Chapman  
P: 561-746-6900x1104  
[tchapman@chenmoore.com](mailto:tchapman@chenmoore.com)

### **PAST PRESIDENT**

Julie Parham, P.E.  
P: 561-586-1798  
[jparham@LakeWorth.org](mailto:jparham@LakeWorth.org)



FLORIDA SECTION

Palm Beach Branch

*Celebrating 65 Years of Excellence*

Palm Beach Branch  
P.O. Box 20456  
West Palm Beach, FL  
33416

## 2017-2018 Committee Chairs

### **SCHOLARSHIP PROGRAM CHAIR**

Sayed Haji, Ph.D., E.I.  
P: 561-682-6430  
[shajimir@sfwmd.gov](mailto:shajimir@sfwmd.gov)

### **COMMUNITY OUTREACH**

Paula Fonseca, P.E.  
P: 561-281-4480  
[pfonseca@chenmoore.com](mailto:pfonseca@chenmoore.com)

### **YOUNG MEMBERS**

Marlena Trier  
P: 561-799-3855  
[marlena.trier@jacobs.com](mailto:marlena.trier@jacobs.com)

Yehya Siddiqui  
P: 561-445-9254  
YSiddiqui

[@TaylorEngineering.com](mailto:@TaylorEngineering.com)

### **SOCIAL MEDIA CHAIR**

Estela Aguilar  
P: 954-232-1401  
[eleonaguilar@teamgfa.com](mailto:eleonaguilar@teamgfa.com)

### **K-12 OUTREACH**

Brent Whitfield  
P: 561-746-6900 x1160  
[bwhitfield@chenmoore.com](mailto:bwhitfield@chenmoore.com)

Brett Johnson  
[brett.johnson@kimley-horn.com](mailto:brett.johnson@kimley-horn.com)

### **WEBMASTER**

Thomas Montano  
P: 772-924-3575  
[Tmontano@teamgfa.com](mailto:Tmontano@teamgfa.com)

### **FAU ASCE STUDENT CHAPTER PRESIDENT**

Darryn Long  
[dlong2012@fau.edu](mailto:dlong2012@fau.edu)

### **FAU STUDENT ADVISOR**

Eduardo Duran  
[eduardo.duran@mockroos.com](mailto:eduardo.duran@mockroos.com)

### **FAU FACULTY ADVISOR**

Dr. Frederick Bloetsher  
[fbloetsc@fau.edu](mailto:fbloetsc@fau.edu)

### **EWRI Chair**

Brent Whitfield  
P: 561-746-6900x1160  
[bwhitfield@chemoore.com](mailto:bwhitfield@chemoore.com)

### **EWRI Committee**

Sayed Haji, Ph.D., E.I.  
P: 561-682-643  
[shajimir@sfwmd.gov](mailto:shajimir@sfwmd.gov)

Emily McBryan  
P: 561-713-1320  
[emcbryan@collectivewater.com](mailto:emcbryan@collectivewater.com)

## 2017-2018 Florida Section Officers

### **PRESIDENT**

Robert Jackson, P.E.  
[robert.jackson@rsandh.com](mailto:robert.jackson@rsandh.com)

### **PRESIDENT-ELECT**

Rachel Haeseler, P.E.  
[haeselerRA@gru.com](mailto:haeselerRA@gru.com)

### **SECRETARY/ TREASURER**

Barton Fye, P.E.  
[barton.fye@kimley-horn.com](mailto:barton.fye@kimley-horn.com)

### **PAST PRESIDENT**

Chris Rader, P.E.  
[crader@altamonte.org](mailto:crader@altamonte.org)

### **DISTRICT I VICE PRESIDENT**

Tzufit Boyle, P.E.  
[tzufit.boyle@hdrinc.com](mailto:tzufit.boyle@hdrinc.com)

### **REGION 5 GOVERNORS**

Steven Goldstein, P.E.  
[Steven-goldstein@att.net](mailto:Steven-goldstein@att.net)

Jeff Earhart, P.E.  
[jeff.earhart@cpwgengineering.com](mailto:jeff.earhart@cpwgengineering.com)

### **REGION 5 DIRECTOR**

Peter Moore, P.E.  
[pmoore@chenmoore.com](mailto:pmoore@chenmoore.com)

Please verify/update your  
mailing/email  
information with

**ASCE National  
Headquarters**

at

1-800-548-2723 (ASCE)

or

[http://www.asce.org/  
membership](http://www.asce.org/membership)

## ASCE PALM BEACH ON:

**facebook**

Please check out our newly revamped  
Facebook page @

<https://www.facebook.com/ascepalmbeach/>

Follow our page to track upcoming events and to get  
updates on some of the amazing events and volun-  
teering your fellow ASCE members are involved in.  
For any questions about the Facebook page please  
contact our social media chair member.

Visit the  
Florida Section at:  
[www.fla-asce.org](http://www.fla-asce.org)



**ASCE JOB POSTING  
2017-2018  
PALM BEACH COUNTY, FLORIDA  
FACT SHEET / INVOICE**



---

<u>CIRCULATION</u>	Approximately 1400+ members of the Palm Beach Branch ASCE Email List
<u>FREQUENCY</u>	<b>2 newsletters</b> distributed electronically each quarter (FEB / MAY / AUG / NOV) & Job posting on ASCE Palm Beach Branch website for <b>6 months</b> .
<u>PUBLICATION SIZE</u>	8-1/2 inches x 11 inches
<u>COST</u>	\$50 per listing

---

INFORMATION FOR LISTING: See for reference: <http://www.palmbeach-asce.org/listings.asp>

Job Title: \_\_\_\_\_

Location: \_\_\_\_\_

Description: \_\_\_\_\_

\_\_\_\_\_

\_\_\_\_\_

Contact: \_\_\_\_\_

Phone: \_\_\_\_\_

Email: \_\_\_\_\_

**INVOICE**

Company Name \_\_\_\_\_ Attn. \_\_\_\_\_

Address \_\_\_\_\_ City \_\_\_\_\_ State \_\_\_\_\_ Zip \_\_\_\_\_

Telephone \_\_\_\_\_ Email \_\_\_\_\_

Payee: **ASCE PALM BEACH BRANCH**

Amount Enclosed \_\_\_\_\_

---

Send check (Payable to ASCE Palm Beach Branch) and job posting (email preferred) to:

**Teresa Chapman**  
ASCE Palm Beach Branch Secretary  
500 S Australian Avenue South  
Suite 850  
West Palm Beach, Florida 33401  
Email: [tchapman@chenmoore.com](mailto:tchapman@chenmoore.com)





ASCE NEWSLETTER ADVERTISEMENT  
2017-2018  
PALM BEACH COUNTY, FLORIDA



SPONSORSHIP & ADVERTISEMENT  
FACT SHEET / INVOICE

---

CIRCULATION Approximately 1400+ members of the Palm Beach Branch ASCE Email List

FREQUENCY **4 newsletters** distributed electronically each quarter (FEB / MAY / AUG / NOV)  
& Advertisement on ASCE Palm Beach Branch website for **12 months**.

PUBLICATION SIZE 8-1/2 inches x 11 inches

APPROXIMATE STANDARD UNIT IN INCHES / COST:

<u>Space Units</u>	<u>Width</u>	<u>Depth</u>	<u>Cost</u>
Business Card	2.03 in	1.22 in	\$ 100

---

(Please fill out invoice and return with check)

**INVOICE**

Company Name \_\_\_\_\_ Attn. \_\_\_\_\_

Address \_\_\_\_\_ City \_\_\_\_\_ State \_\_\_\_\_ Zip \_\_\_\_\_

Telephone \_\_\_\_\_ Email \_\_\_\_\_

Payee: **ASCE PALM BEACH BRANCH**

Amount Enclosed \_\_\_\_\_

---

Send check (Payable to ASCE Palm Beach Branch) and advertisement (email preferred) to:

**Teresa Chapman**  
ASCE Palm Beach Branch Secretary  
500 S Australian Avenue South  
Suite 850  
West Palm Beach, Florida 33401  
Email: [tchapman@chenmoore.com](mailto:tchapman@chenmoore.com)