



# ASCE BATON ROUGE BRANCH NEWSLETTER

## 1st Quarter FY 2015-2016

### PRESIDENT'S MESSAGE

---



#### **One Door Closes, Another Opens!**

*By Danielle Welborn, P.E.,*

ASCE Baton Rouge Branch President (FY 2015-16)

I hope you had a wonderful holiday with your family and friends! As the door closes on 2015, we look back at what a wonderful year it was and we anxiously await an exciting 2016!

In 2015, we had four members reach Life Member status, an honor received for having 35+ years of membership and service to ASCE:

**Mr. Jesse Arnold**

**Mr. Gasper Chifichi**

**Mr. Robert Overall**

**Mr. George Webb**

Congratulations to our Life Members and thank you for your commitment to ASCE!

2015 was full of informative luncheons, an exceptional Spring Conference, and a very merry Christmas Party at Bocage Racquet Club {pictures from the Christmas party are included on the last page of the newsletter}. In August, we completed the second chapter of the *Engineer It!* workshop at Louisiana Art and Science Museum, called *Water Works*. We look forward to the next workshop beginning in February 2016 {see below for more information}. We installed the 2015 – 2016 branch officers in September at Drusilla Seafood Restaurant. We also presented the ASCE Baton Rouge Branch awards to some of our outstanding members:

*Outreach Award – Sarah Laakso\**

*Outstanding Civil Engineering Educator Award – Jongwon Jung*

*Outstanding Young Civil Engineer Award – Rudolph A. Simoneaux, III\**

*Outstanding Civil Engineer Award – Carol Friedland*

*Lifetime Achievement Award – Ronald J. Rodi*

*ASCE Civil Engineering Wall of Fame Award – George Z. Voyiadjis*

**\*Sarah Laakso and Rudy Simoneaux** also received the Louisiana Section awards for Outreach and Outstanding Young Civil Engineer, respectively.

Congratulations on your accomplishments and thank you for your contributions to the profession!

The October luncheon was an exciting field trip at LSU to see and hear about the largest project in LSU's history, the Patrick F. Taylor Renovation and Expansion. This \$110 million project is scheduled to be completed in October 2017 and will allow all engineering departments to be housed in one building on campus. The Saturday following the luncheon, ASCE hosted a tailgate for the Southern University civil engineering students at Southern's Homecoming. The event was well attended by over 50 students! Thank you to **Kahli Cohran** for organizing this event for the students! At the November luncheon, held at Juban's, we learned about the benefits of Ram Jack's helical piles and anchor systems. We had wonderful participation in our annual food drive where we collected two full barrels of canned goods for the Greater Baton Rouge Food Bank! Thank you to all those who contributed! We also heard from Sarah Lomax Gray, the Founder and Executive Director of the *Lauren Savoy Olinde Foundation*, about an upcoming service project we will be assisting her with {more information below}. Each year, we commence the holiday season in early December with our ASCE Christmas party. Our members and their spouses are able to visit with one another in a relaxed, fun atmosphere. This year was no exception – we had magnificent attendance and a delicious spread of food and drinks for everyone to enjoy! Thank you to those who attended and a BIG thank you to our sponsors!!

In December, we were informed that the State Public Affairs Grant (SPAG) proposal that the Baton Rouge Branch and Louisiana Section's Government Relations Committee jointly submitted was accepted. We will receive \$3000 to publicize the shortfall in Louisiana's infrastructure funding by relating a family's annual expenses to the amount they pay in state gas taxes through graphics displayed on three digital billboards strategically located in Baton Rouge, Shreveport, and New Orleans. The proposal will be posted on the Branch's website. Thank you to **Blake Roussel** for his hard work in preparing the proposal!

In 2016, we have many exciting events planned and scheduled impressive speakers for the luncheons. To kick off the year, we heard from **Dr. John Pardue** about *Bioremediation: Moving from Laboratory Experience to Field Results* at our January luncheon at Drusilla (January 21). The next month, we will celebrate Engineer's Week at Louisiana Engineering Society's annual banquet at Juban's (February 25). At the banquet, we will present a deserving engineering student with a \$1,000 scholarship so we would love for our members to show their support by attending the banquet. Also in February, the third workshop for *Engineer It!* will begin. *Dig It!* is focused on the geotechnical field of engineering. The children will learn the basics of geotechnical engineering and design, participate in soil analysis using a real sieve, and conduct an Atterberg Limits test, along with other fun activities. We are excited to be part of the development of the *Engineer It!* program and encourage our members to bring their children, grandchildren, nieces, and nephews to participate in the workshop. The first workshop is Saturday, February 20 @ 11:00 am and continues at the same time on the 3<sup>rd</sup> Saturday of each month through June. The workshop is open to children ages 6 to 12. More information can be found at [www.lasm.org](http://www.lasm.org).

In the early spring, we will be participating in a service project funded by *The Lauren Savoy Olinde Foundation*. This foundation works with schools and parks to add shade to playgrounds so children are protected from the sun's harmful ultraviolet rays. We will assist in the construction of a playground and the shade, but additional assistance is needed on the front end with design documents. Please email [President.ascebr@gmail.com](mailto:President.ascebr@gmail.com) if you are interested in assisting this deserving project.

In March, we plan on having an ethics topic to fulfill your ethics PDH requirement prior to the March 31 renewal (March 17). In April, **Mr. Gary Pentek** and **Mr. Bill King** will be speaking about DOTD's Off System Bridge Program and Bridge Rating Process. We always look forward to the joint luncheons with LES in May and August. In May, LES will host the luncheon at Juban's and in August, ASCE will host

the luncheon at Drusilla. We plan on having the new La DOTD Secretary, **Dr. Shawn Wilson**, as the speaker for the August luncheon. We are thrilled and honored to have the 2016 President-Elect for the National ASCE, **Norma Jean Mattei**, come to speak at our luncheon in June (June 16). We will also be recognizing and celebrating our Past Presidents so this will be a very special luncheon.

We hope that you are as excited about these upcoming events as we are! The 2015-2016 Board has been diligently working to bring you a diverse line up of speakers and interesting new opportunities but we are always open to suggestions for luncheon topics, speakers, and group activities. We welcome your comments and suggestions! Thank you for allowing me to serve as your President for 2015-2016. With arms wide open, we welcome 2016!

## **PASSING THE BATON: FINAL WORDS FROM THE PAST PRESIDENT**

---



*By: Kirk Lowery, PE*  
ASCE Baton Rouge Branch Past President

Usually at the end of the President's term, he or she gives a review of the accomplishments and activities over the previous year. Instead of talking about those things that come and go, what really matters are the people because when it is all said and done that is what or who we remember. I have been blessed on this board with talented and beautiful people. My definition of beauty has always been what is in the heart. I really believe the employers of the people on this board are very lucky to have such beautiful people. And you should know, the reason ASCE was able to do the 100-year Gala last year or the Section Conference this year was because of these people.

Thomas Montz had the heart to organize as the Younger Member Chair a baseball tailgate with the LSU chapter. Ben McArdle, as the 2014-15 LSU Practitioner Advisor, was also a part of this and he decided to drop by with food for the students during finals. This was not a planned, organized affair; he and Jarrett Bauer, 2014-15 Education Director, just decided to do this. And when the Section conference needed signage at the last minute, there was Jarrett to step in. Blake Roussel, 2014-15 Membership Director, is ALWAYS there. He takes on everything. He stepped in to serve as chair of Aviation on the report card, he takes care of the screen we use not because he has to, but just to be helpful. Kahli Cohran has two roles on this board, besides being Secretary/Treasurer he also takes care of Southern's Student Chapter as the Interim Southern Practitioner Advisor. Starting his own company, volunteering, Southern homecoming, etc.; the list goes on, and he is tireless. The last board members I will mention (and excuse my piggish sexism) are the outwardly as well as inwardly beautiful Danielle Welborn (2014-15 President Elect), Jennifer Shortess (2014-15 Vice President) and Sarah Laakso (2014-15 Director of Programs). I bring them up together because I have watched over the years as Presidents Rudy Simoneaux and Joey Coco had to get the Gala and Section Conference done, and really leaned on these beautiful people. In every instance these three, as well as the rest of this board, goes beyond the job descriptions given in our bylaws. I am lucky to have served with not only them, but those who were on the board previously, like Rudy, Clint Willson, Adam Smith and Jeff Duplantis; I look forward to working with Molly Bourgoyne as the 2015-16 Membership Director and Tyler Branch as the 2015-16 LSU Practitioner Advisor in the next year.

## AROUND THE BRANCH

---



### **L.COPRI & LSU** *by Jarret Bauer, P.E.*

L.COPRI branch representatives reached out to the LSU branch of the American Society of Civil Engineers in October to raise awareness about coastal restoration and the new formation of a L.COPRI branch at LSU! Local representatives Jarret Bauer, PE; Daniel Dehon, PE; Amanda Taylor, EI; and Venu Tammineni, PE all attended a regular meeting of the LSU ASCE branch at the LSU Germano Center to speak on behalf of L.COPRI. The meeting was extremely well-attended. Each representative was able to speak about the importance of coastal restoration from their own professional perspective - it was no accident that the group comprised speakers from both the public and private sectors! There were numerous follow up questions and discussions about the importance of coastal restoration in the Louisiana and surrounding Gulf Coast areas. As a whole, it was great to see the students involved, interested, and existing about a future in coastal restoration.



### **L.COPRI** *by Molly Bourgoyne, P.E.*

In December, L.COPRI held its Fall Technical Seminar. It included topics on the four pillars, Coasts, Oceans, Ports, and Rivers, as well as an Ethics Presentation, offering a total of 5.0 PDHs. For Coasts, there was a panel discussion on advances in marsh creation design and construction; this was a continuation of the topics discussed in 2014. Oceans was covered with a talk on deepwater oil and gas exploration and technology being used in the Gulf of Mexico. The topic of Ports involved a report on southwest Louisiana's ongoing and upcoming projects as well as an economic forecast. And lastly, the Rivers discussion provided a summary of efforts being made to implement sediment diversions on the Lower Mississippi River. Overall, it was a lively and informative day that offered many thought-provoking presentations.



### **LSU Student Chapter** *by Tyler Branch*

ASCE at LSU has been busy this fall semester with our bi-monthly student chapter meetings, attending community service events, and touring the Patrick F. Taylor construction site on LSU's campus. The most recent chapter meetings featured guest speakers from ASCE COPRI and BASF. Daniel Dehon and Jarret Bauer with ASCE COPRI spoke about the Coasts, Oceans, Ports and Rivers Institute of ASCE and how students can get involved. Kenneth Arceneaux from BASF spoke about various civil engineering projects, tips on how to be successful, and ethics in engineering.

Our ASCE student chapter joined the Louisiana Water Environment Association (LWEA) student members for a community service event to clean up the LSU lakes on October 11, 2015. A total of 24 students participated in removing debris and trash around the lakes and the surrounding areas.



In conjunction with the ASCE Baton Rouge Branch, ASCE student members attended a luncheon featuring the \$110 million Patrick F. Taylor Hall renovation and expansion project. Guest speakers Roger Husser, Director of Planning, Design, and Construction for LSU Facility Services, and Mike Lemoine, Operations Manager for the Lemoine Company, spoke of the current construction progress made in the renovations and expansion and of the future phases in construction. A tour of the perimeter of the construction site followed the meeting, guided by Roger Husser. To learn more about our ASCE chapter at LSU, please visit [asce.lsu.edu](http://asce.lsu.edu).



**Left: LSU Lake Clean-Up, October 11, 2015; Right: Rendering of Completed Patrick F. Taylor Hall East Elevation** (courtesy of LSU College of Engineering)



## **Younger Members** by Thomas Montz

The Baton Rouge younger member group held two social events to wrap up 2015. The first was a joint social event held in conjunction with the Louisiana Engineering Society (LES) at the Bulldog. This event was a great networking opportunity as many members from both societies (young and old) came out to relax after work. Another key benefit of combining the groups is having a bigger bar tab. The money on the tab was gone in about two hours!

The second event was the unofficial annual Christmas “After-party”. As you know, the Branch holds an annual Christmas Party typically at the Bocage Racquet Club each December. The members who are left at the end of the official party will find another bar go to. This year, the “after-party” was at Lock & Key Whiskey Bar just down Corporate Blvd from the Racquet Club. About 15 members joined us with a grand total of 4 remaining as the lights came on at 2 am!

As 2016 begins, the Younger Member Group continues to plan social events and volunteer events to engage our college students and members under 35. But we also welcome the entire Baton Rouge Branch membership to all younger member events. If you want to know when the next event is happening, the best way is to “like” us on Facebook. The events posted to Facebook will also now show up on the homepage for the Baton Rouge Branch, which is [www.ascebr.org](http://www.ascebr.org).

**Next Younger Member Social:** TBD. Where do YOU want to go?! Feel free to email with suggestions... [brasce.ym@gmail.com](mailto:brasce.ym@gmail.com)

## UPCOMING EVENTS

### February:

- In February, *Engineer It!* will begin. *Dig It!* is focused on the geotechnical field of engineering. The first workshop is Saturday, February 20 @ 11:00 am and continues at the same time on the 3<sup>rd</sup> Saturday of each month through June. The workshop is open to children ages 6 to 12. More information can be found at [www.lasm.org](http://www.lasm.org).
- On the 25<sup>th</sup>, the LES E-Week Luncheon will honor our \$1,000.00 Scholarship Recipient (at Juban's)

### March:

- The March Luncheon will be held on St. Patrick's Day! An Ethics PDH will be offered in anticipation of the March 31<sup>st</sup> renewal deadline. (March 17<sup>th</sup> at Drusilla Seafood)

### April:

- The April Luncheon will be held on the 21<sup>st</sup>, **Mr. Gary Pentek** and **Mr. Bill King** will be speaking about DOTD's Off System Bridge Program and Bridge Rating Process.

## Notes from the Board

**Facebook Page** – Facebook is becoming an integral tool for disseminating information to our membership. Helpful information will be posted to the ASCE Baton Rouge Facebook page throughout the year including luncheon information, pictures, important issues concerning the engineering community, and lots more! So we highly recommend that you... LIKE US ON FACEBOOK!

**ASCEBR.org** – Also check out our re-tooled website. The new website has lots of cool functionality. You can see a list of our Past Presidents, view our Facebook timeline, check out the upcoming events calendar, and even RSVP for events straight from the website calendar.

**Name Badges** – If you have noticed all of the good looking name badges that our members have been wearing at the meetings, and you would like to order one then please let us know. Send an email to [secretary.ascebr@gmail.com](mailto:secretary.ascebr@gmail.com) and we will contact you for further information.

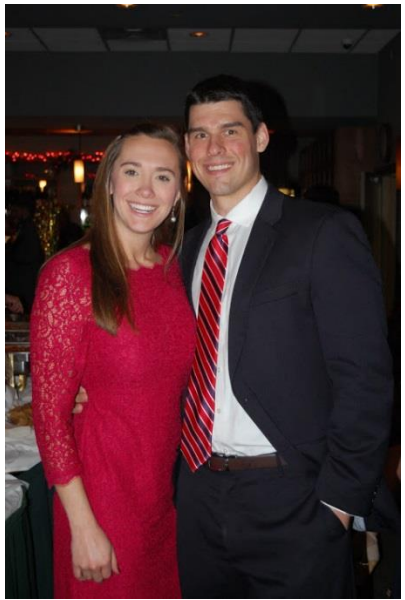
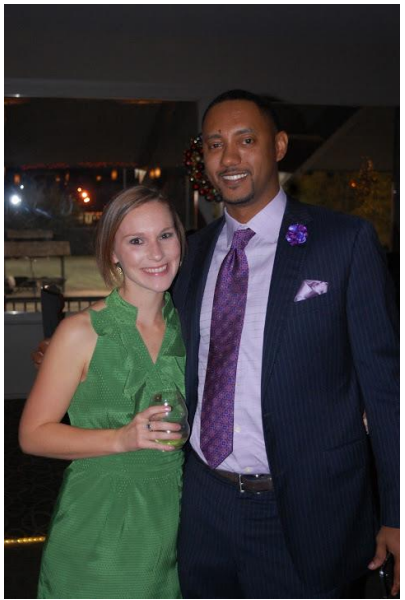
**Younger Member Notes** – Information will come both through constant contact emails and on our Facebook page. If you haven't already, go ahead and 'like' the Baton Rouge Younger Member Group on Facebook to see the latest information posted in your newsfeed. For More information on the benefits of being a Younger Member see [ASCE-National Younger Member's Page](#).

**RSVP** - Please remember to RSVP to our monthly luncheons! An accurate headcount goes a long way to planning our events. Thanks!!!!

## 2015 Christmas Party at Bocage Raquet Club

















## Engineer's Humor

### Engineer Speak

What is said	What it means
A number of different approaches are being tried.	We don't know where we're going, but we're moving.
An extensive report is being prepared on a fresh approach to the problem.	We just hired three guys. We'll let them kick it around for a while.
Developed after years of intensive research.	It was discovered by accident.
Modifications are underway to correct certain minor difficulties.	We threw the whole thing out and are starting from scratch.
Preliminary operational tests were inconclusive.	The darn thing blew up when we threw the switch.
Test results were extremely gratifying.	It works and, boy, are we surprised!
The design will be finalised in the next reporting period.	We haven't started this job yet, but we've got to say something.
The entire concept is unworkable.	The only guy who understood the thing just quit.
We need close project coordination.	We should have asked someone else. <i>Alternate:</i> Let's spread the responsibility for this.



## 2015-2016 Baton Rouge Branch Board



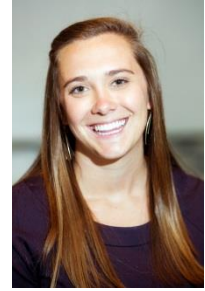
**President**  
Danielle Welborn, P.E.  
President.ascebr@gmail.com



**President Elect**  
Kahli Cohran, E.I.  
PresidentElect.ascebr@gmail.com



**Vice President**  
Blake Roussel, P.E.  
VicePresident.ascebr@gmail.com



**Secretary-Treasurer**  
Sarah Laakso, P.E.  
Secretary.ascebr@gmail.com



**Membership Director**  
Mary "Molly"  
Bourgoyne, P.E.  
Membership.ascebr@gmail.com



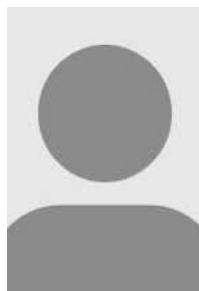
**Programs Director**  
Jarret Bauer, P.E.  
Programs.ascebr@gmail.com



**Education Director**  
Ben McArdle, P.E.  
Education.ascebr@gmail.com



**LSU Practitioner  
Advisor**  
Tyler Branch,  
E.I.  
lsuadvisor.ascebr@gmail.com



**SU Practitioner  
Advisor**  
Vacant – Please  
Volunteer!  
lsuadvisor.ascebr@gmail.com



**Younger Member  
Chair**  
Thomas Montz,  
P.E.  
brasce.ym@gmail.com



**Past President**  
Kirk Lowery, P.E.  
PastPresident.ascebr@gmail.com