

Alaska Capital Engineers

A branch of the American Society of Civil Engineers

January Newsletter

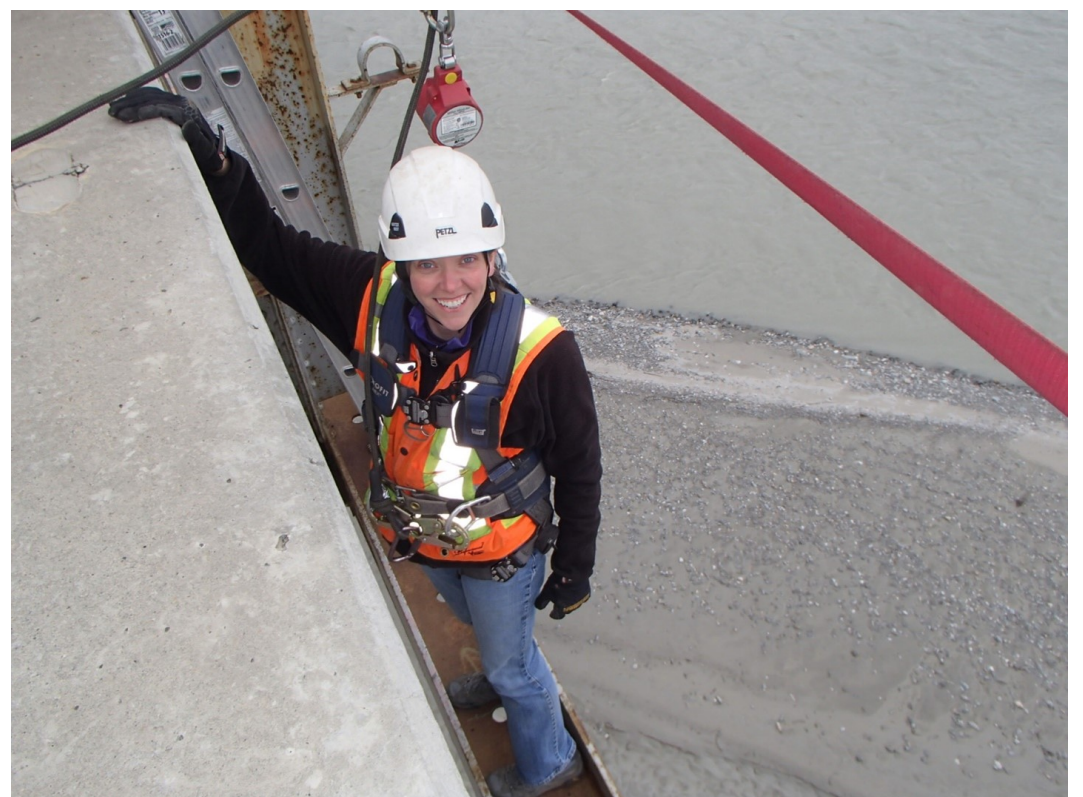
January Presentation:

North Tongass Bridge Improvements - Waterfall Creeks

**Presented By: Leslie Daugherty, P.E.
AK DOT&PF**

**Date: January 19th
Time: 12:00 PM**

**Location: Webex
(See email for meeting link)**



Speaker Bio:

Leslie is a Senior Bridge Engineer for the Alaska Department of Transportation & Public Facilities (DOT&PF) Bridge Section. She has been designing bridges for over 20 years. During the summer, she travels throughout the state inspecting bridges and providing technical assistance for bridge construction projects. Some of her other duties include managing a team of design engineers and contributing to DOT&PF bridge research projects. Leslie is a member of the AASHTO Committee for Bridges and Structures (COBS), including a voting member of the T-17 Metals Fabrication subcommittee and vice-chair of the T-2 Joints and Bearings subcommittee. She is a member of the national Transportation Research Board AKC70 Standing Committee on Fabrication and Inspection of Metal Structures.

Leslie will be presenting on the “North Tongass Bridge Improvements - Waterfall Creeks” project, which consisted of two bridges, First and Second Waterfall Creeks (Bridge Numbers 414 and 415), on the North Tongass Highway in Ketchikan. The project involved challenging site conditions: two deep ravines constrained by exposed rock faces, overhead utilities, and narrow right-of-way. There are no alternate routes so detour bridges were required to maintain traffic. Additionally, the COVID pandemic escalated midway through construction, adding another complication to the construction challenges.

**Visit our website at <https://branches.asce.org/juneau/> for the following:
PDH Certificates, Recorded Presentations, Newsletters, ASCE Membership,
Job Postings**

Announcements and More!

Engineer of the Year and Project of the Year Nominations

It's time to think about our hard-working friends and coworkers and their projects. These awards recognize a Juneau engineer that has demonstrated excellence in engineering skill through the design, coordination, and execution of the construction. Please consider nominating an engineer and/or project for this year's awards. Nomination forms can be found on the ASCE Juneau branch website <https://branches.asce.org/juneau/> under the "Resources" tab.

Note: The deadline for nominations is January 31st!

Current Job Postings:

(Visit <https://branches.asce.org/juneau/> for more information)

PND Engineers, Inc - Civil Engineer - Juneau, AK

RESPEC - Senior Civil Engineer - Juneau, AK

RESPEC - Professional Land Surveyor - Juneau, AK

2021-2022 ALASKA CAPITAL ENGINEERS OFFICERS

ASCE

President – Janice Wells, PE

Vice President – Micki Minsch, EIT

Treasurer – Sean Kelly, EIT

Secretary – Chris Bydlon, EIT

Past President – Lucas Chambers, PE

Emeritus – Vacant

Special Committees

School Outreach/STEM Coordinator - Please Volunteer

Dream Big Coordinator - Please Volunteer

ASPE - Alaska Society Contacts

Past President – Craig Bledsoe, PE

President – Jeanne Bowie, PE

President Elect – Vacant

Secretary – Leora Houtary, PE

Treasurer – Iain McPherson, PE

NSPE House of Delegates - Brad Fristoe, PE

Anchorage Chapter Director – Brian Lamson, PE

Fairbanks Chapter Director – Frank Wuttig, PE

Juneau Chapter Director - Darrell Wetherall, PE

Visit our website at <https://branches.asce.org/juneau/> for the following:
PDH Certificates, Recorded Presentations, Newsletters, ASCE Membership,
Job Postings

Serving Alaska for more than 50 years.
dowl.com



Environmental & Land Development
Water / Water Resources
Transportation
Civil
Geo-Construction



DOWL

ANCHORAGE

FAIRBANKS

JUNEAU

KETCHIKAN

KODIAK

RESPEC

RESPEC WELCOMES HAIGHT AND ASSOCIATES

PROVIDING SOUTHEAST ALASKA WITH **LOCALLY BASED** FULL DISCIPLINE
ENGINEERING, SURVEYING, PLANNING, MATERIALS TESTING, AND MORE

RESPEC.COM // 907.780.6060

Thank You to Our Sponsors!



proHNS LLC

Serving Southeast Alaska and Beyond.

Engineering, Technical, **and**
Administrative Services

Juneau: 907-780-4004 • Haines: 907-419-6070
solutions@proHNS.com • www.proHNS.com



WE
WILSON
ENGINEERING

**Providing Professional Project Management and
Inspection Services in Southeast Alaska for over 30 years.**

175 South Franklin St, Suite 300 Juneau, Alaska 99801
Phone: 907.586.2100 | email: we@wileng.net | www.wileng.net



Thank You to Our Sponsors!

Proudly Serving Juneau with


100%

RENEWABLE

HYDRO POWER

www.AELP.com  

RESPONSIBLE • RELIABLE • RENEWABLE




Shoemaker Harbor, Wrangell



Sysco Building, Juneau



ENGINEERS, INC.

9360 Glacier Hwy, Ste. 100, Juneau, AK 99801

Phone 907.586.2093 Fax 907.586.2099

www.pndengineers.com

**Innovative
Design
Solutions**

Engineering Services: Civil, Structural, Contract Administration, Marine Facilities, Geotechnical, Planning, Permitting, Surveying, Hydrology, Coastal Engineering, Environmental, Construction Engineering Support, Transportation and Recreational Facilities

Thank You to Our Sponsors!