

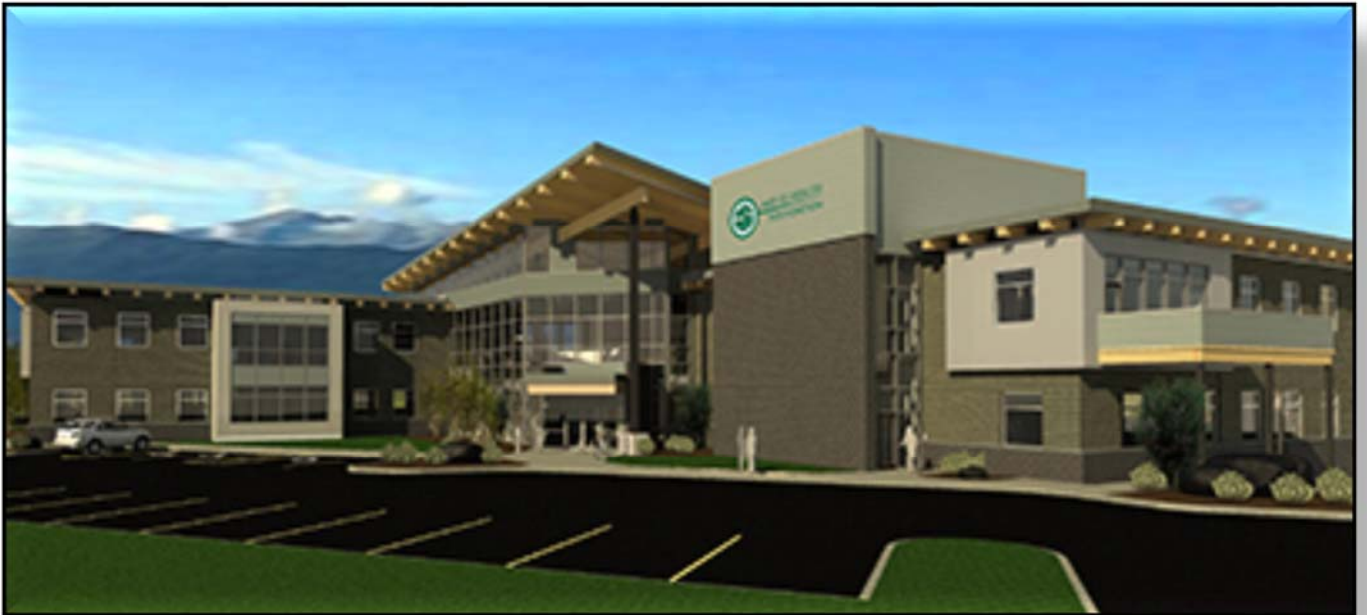
DECEMBER MEETING ANNOUNCEMENT

This month we will be talking with:

***Kathleen Benoit & Andy Simasko
from Architects Alaska***

Title:

***Mat-Su Health Foundation –
Community Resource Center Office Building***



The Mat-Su Health Foundation is constructing a 46,000 sf multi-tenant facility in Wasilla, at the corner of Bogard and Crusey. The facility will house foundation staff, including a Community Resource Center that will provide support services to Mat-Su Valley residents with programs such as Aging and Disability Resource Center, LINKS Mat-Su, Parent Resource Center, and Raising Our Kids With Kindness Mat-Su. In addition, the facility will provide lease space for compatible tenants. Join us as the design team expand on the elements of design, including user needs, environmental factors, and visual appeal.

WHEN: Wednesday, December 20, 2017
12:00-1:00 p.m.

WHERE: Mat-Su College, Room JKB 128

LUNCH \$7 for pizza