

SEPTEMBER 2024 MEETING ANNOUNCEMENT

This month we will be hearing from:

David Griffin

Title:

***Navigating Port MacKenzie:
A Look at Tides, Currents, Ice, and Sediment***



David Griffin is the Port Operations Manager for the Matanuska-Susitna Borough, Port MacKenzie. Prior to working as the port manager, David worked as a land manager for the State of Alaska Department of Natural Resources in the Trust Land Office, Division of Parks and Outdoor Recreation, and the Division of Mining, Land and Water. David has a B.S. in Environmental Studies from the Evergreen State College in Olympia Washington (2003).

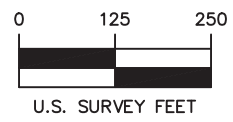
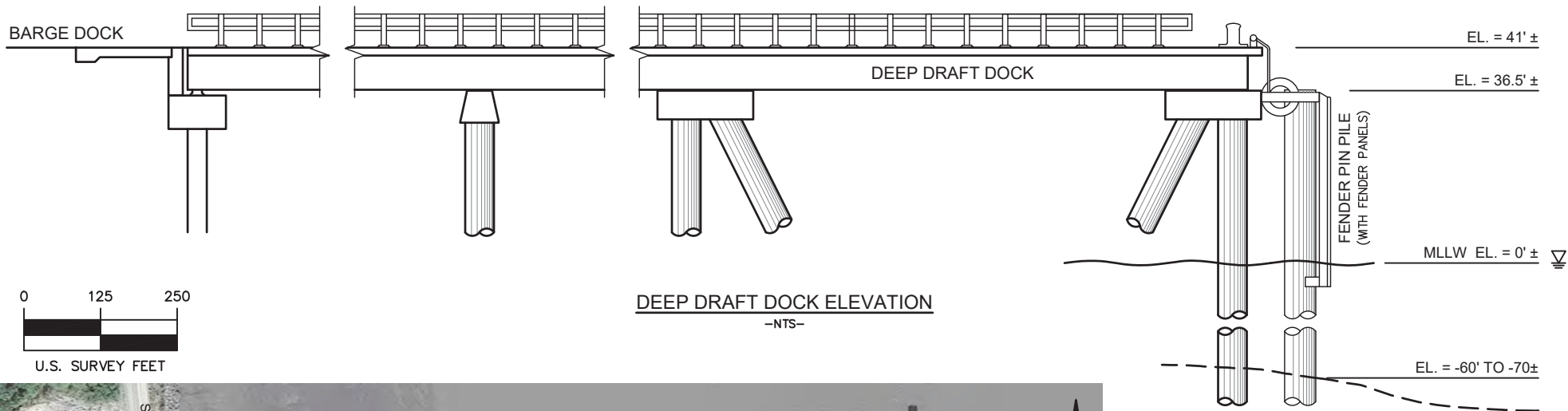
Port MacKenzie is a small industrial port located on the west side of Cook Inlet, just two miles north of Anchorage. The port deals with extreme tidal fluctuations, strong currents, heavy sediment loads in the water, and ice flows five-months of the year. This presentation will discuss the challenges of operating a port facility in such an extreme environment, and some of the ways we are dealing with infrastructure maintenance and repairs.

WHEN: September 11, 2024 1200 - 1300

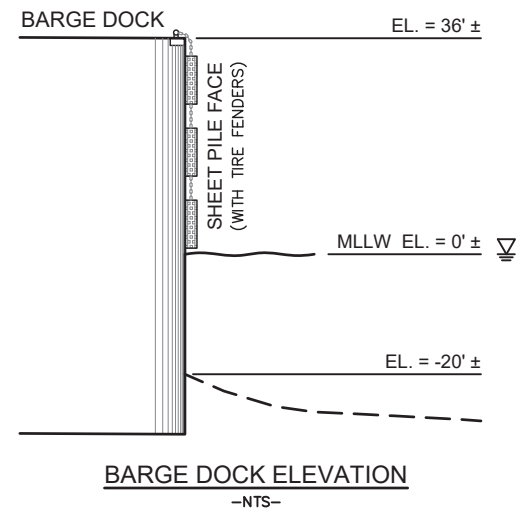
WHERE: Mat-Su College, Room JKB 128

LUNCH: \$10 for PIZZA*

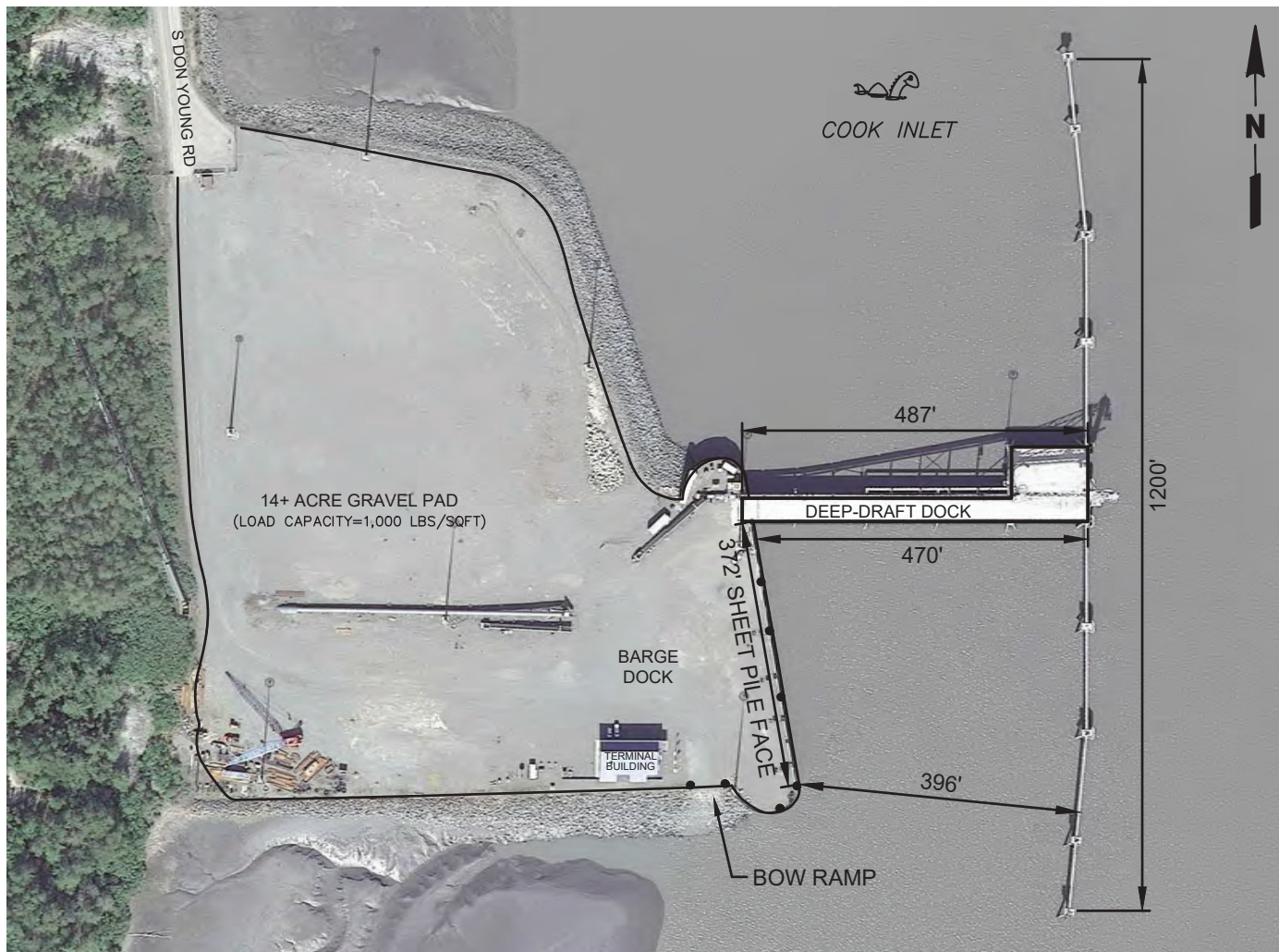
*Bring a friend who hasn't attended within the past six months and lunch for you and your guest are on ASCE.



DEEP DRAFT DOCK ELEVATION
-NTS-



BARGE DOCK ELEVATION
-NTS-



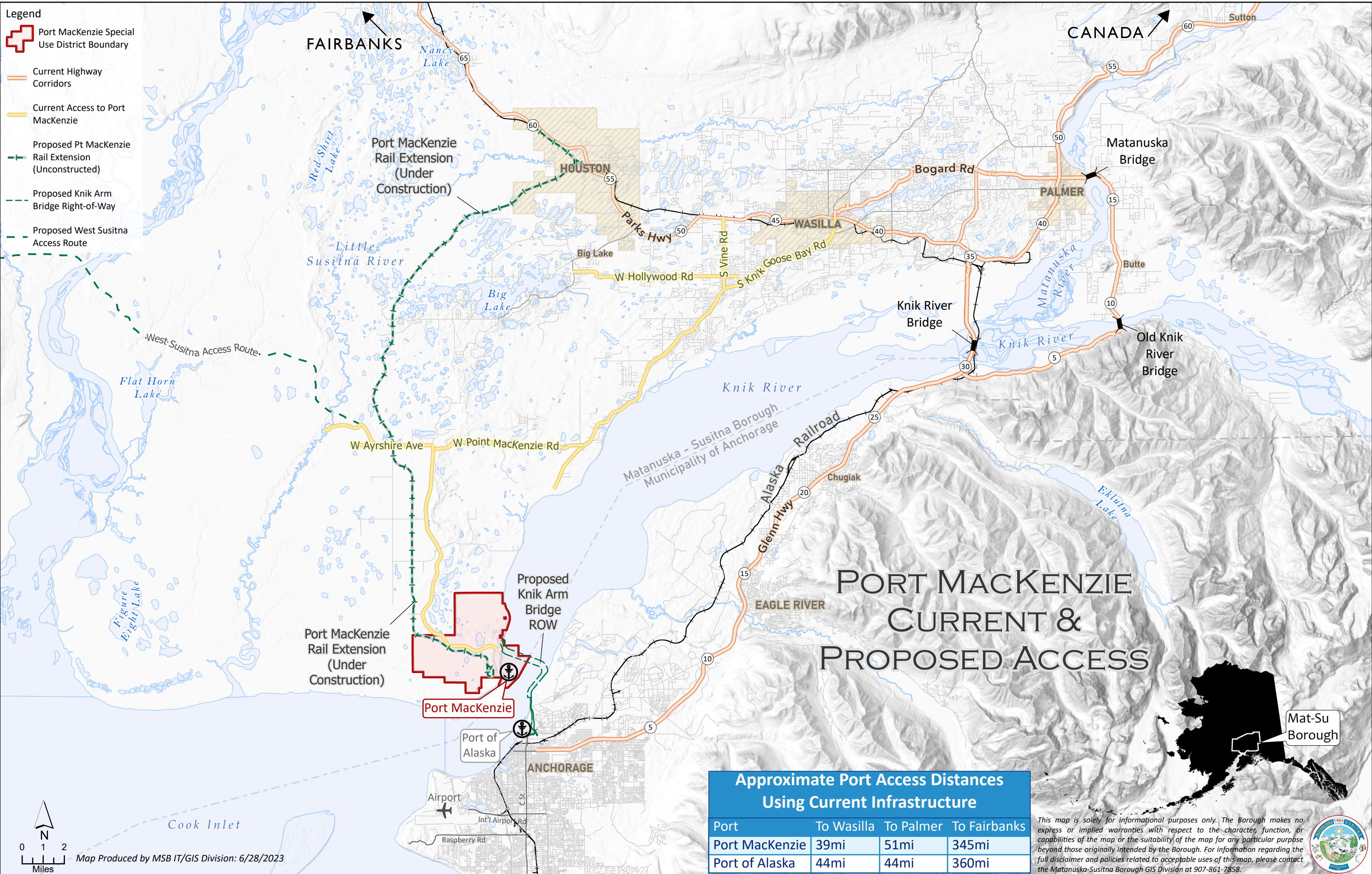
 **MATANUSKA-SUSITNA BOROUGH**
PUBLIC WORKS DEPARTMENT

PORT MACKENZIE
BARGE DOCK AND DEEP-DRAFT DOCK
SPECIFICATIONS

28000 S DON YOUNG ROAD
WASILLA, ALASKA
(907) 861-7799

FEBRUARY 2023

- Legend**
- Port MacKenzie Special Use District Boundary
 - Current Highway Corridors
 - Current Access to Port MacKenzie
 - Proposed Pt MacKenzie Rail Extension (Unconstructed)
 - Proposed Knik Arm Bridge Right-of-Way
 - Proposed West Susitna Access Route



PORT MACKENZIE CURRENT & PROPOSED ACCESS

**Approximate Port Access Distances
Using Current Infrastructure**

Port	To Wasilla	To Palmer	To Fairbanks
Port MacKenzie	39mi	51mi	345mi
Port of Alaska	44mi	44mi	360mi

This map is solely for informational purposes only. The Borough makes no express or implied warranties with respect to the character, function, or capabilities of the map or the suitability of the map for any particular purpose beyond those originally intended by the Borough. For information regarding the full disclaimer and policies related to acceptable uses of this map, please contact the Matanuska-Susitna Borough GIS Division at 907-861-7858.



0 1 2 Miles

Map Produced by MSB IT/GIS Division: 6/28/2023



